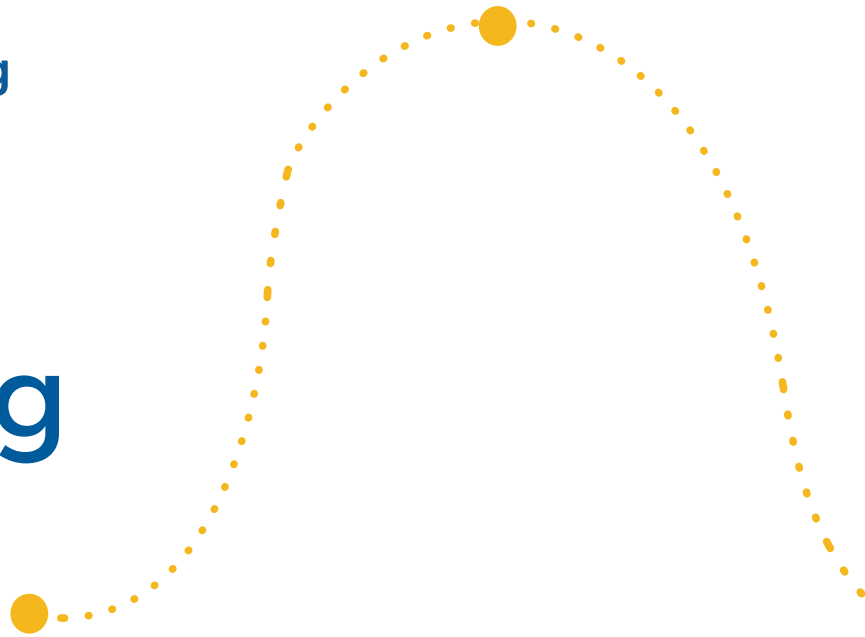




The UK Wellbeing Report



Written by Maria Cotofan, March 2024

With contributions from Prof Lord Richard Layard,
Prof Jan-Emmanuel De Neve and Sarah Cunningham

Commissioned by the World Wellbeing Movement (WWM)



The UK Wellbeing Report¹

Foreword

At the World Wellbeing Movement, we believe that the overall objective of a government should be the wellbeing of its people. Today, traditional metrics of societal success, such as GDP, are not capturing the overall quality of life and happiness of the population. As a result, worrying issues related to mental health remain unaddressed, and underfunded. In a Wellbeing Economy, our definition of societal success shifts beyond GDP growth to delivering shared wellbeing.

We further believe that all government policy should be looked at through the lens of wellbeing. Such changes would transform the way in which policies are assessed, created and implemented; leading to the emergence of fresh priorities that place a greater emphasis on addressing urgent mental health issues.

While the concept of going 'Beyond GDP', and making Wellbeing the over-arching goal of governments across the world is not new, progress to date has been disappointingly slow, even despite ample high-end research outlining the benefits this approach can bring when it comes to reducing the challenges we are facing in today's mental health crisis. That's why the World Wellbeing Movement is focused on moving beyond discussion to achieving real-world action.

In some ways, the UK has been leading the way globally on taking steps to make wellbeing the central goal of public policy. Since 2011, the UK's Office for National Statistics (ONS) has been collecting individual-level data on wellbeing, allowing the life satisfaction of people across the UK to be traced over time. The Life Satisfaction question asks people to answer, on a scale from 0 to 10 the following question: "Overall, how satisfied are you with your life nowadays?". Much academic research has shown that people's self-reported life satisfaction scores are often good predictors of other aspects of their well-being, such as mental health, physical health, and longevity. In other words, how satisfied people feel with their lives can provide valuable information about their overall well-being. Across the UK, the average person's life satisfaction is about 7.5 on that 0 to 10 scale. But measurement is only the first step, and we can only affect positive change at scale when we do something with those measurements, i.e. when we put wellbeing first.

We therefore commissioned this report to better understand the inequalities in life satisfaction (wellbeing) across the UK, and to shine a spotlight on the proportion of people in the UK living with very low levels of wellbeing (i.e. with a life satisfaction of 5 or below). Or, to use our terminology, as explained in this report, to highlight the proportion of the UK population living 'below the Happiness Poverty Line' (HPL).

The findings from this report are alarming. A staggering 1 in 8 people in the UK live below the Happiness Poverty Line: and there are steep wellbeing inequalities across the UK.

The Happiness Poverty Line (HPL) was steadily lowering prior to the COVID-19 pandemic, but although there was some improvement in 2022, the UK is yet to return to pre-pandemic levels, and, in fact, we look set to be about to stabilise at a higher level of HPL than pre-pandemic.

Our hope is that policymakers understand the importance of the data showing the number of people living below the Happiness Poverty Line, much like they do for those living below the economic poverty line, and that they put wellbeing first in all public policy decisions.

We're calling on the UK Government, both incumbent and succeeding, to focus on improving the wellbeing of the UK public, reducing wellbeing inequalities across the UK, and reducing the proportion of UK citizens living below the Happiness Poverty Line ... or else it is letting down its people.

Let's put wellbeing first.

Prof Lord Richard Layard
Prof Jan-Emmanuel De Neve
Sarah Cunningham



¹ Written by Maria Cotofan with contributions from Prof Lord Richard Layard, Prof Jan-Emmanuel De Neve and Sarah Cunningham. Commissioned by the World Wellbeing Movement (WWM) in March 2024

Abstract

Understanding the levels, the distribution, and the evolution of wellbeing across places is of paramount importance to the individuals living in them, to their broader communities, and to policymakers looking to improve the wellbeing of people. In this report we investigate how wellbeing has evolved across the UK over the last decade and show that positive trends in the first part of our time series have been partly reversed following

the Covid-19 Pandemic. We show this in terms of both Life Satisfaction and the share of people experiencing particularly low levels of wellbeing. We refer to the latter as the share living below the Happiness Poverty Line, a group making up roughly 1 in 8 people across the UK. We find that there is significant variation in both these measures across areas, with some places becoming happier over time but many still lagging behind.

Contents

Context	03
Data and Methods	05
Descriptive Statistics	06
Life Satisfaction and Living Below the Happiness Poverty Line Across Areas	09
Before and After Covid	16
Conclusions	25
Appendix	26

Context

Understanding the levels, the distribution, and the evolution of wellbeing across places is of paramount importance to the individuals living in them, to their broader communities, and to policymakers looking to improve the wellbeing of people. As such, being able to measure and document these trends at smaller geographical units represents a first step in offering a comprehensive picture of the quality of life experienced by people around the world.

Documenting these trends across countries has created significant interest, but the lack of data availability within countries has made it challenging to measure the spatial distribution of wellbeing across national geographies. In the United Kingdom, this exercise has been made possible through the introduction of the wellbeing module in national statistics. Since March 2011 the Annual Population

Survey, one of the largest representative surveys of the UK population, has begun to collect individual-level data on wellbeing, allowing the life satisfaction of people across the UK to be traced over time.² In combination with geographical identifiers available in the Annual Population Survey, this allows researchers to create a picture of life satisfaction across all areas in the UK and of how it has shifted in recent years.

Since 2014, the Office for National Statistics has produced yearly reports showing how average Life Satisfaction has evolved across the nation.³ Overall, life satisfaction has been trending upwards in the first part of the decade and flattened out in the second part of the 2010s. During the Covid-19 Pandemic, the life satisfaction of individuals across the UK decreased markedly, particularly between April 2020 and March

² More information on the data can be found at <https://www.ons.gov.uk/peoplepopulationandcommunity/wellbeing/methodologies/personalwellbeingintheukqmi>.

³ The reports can be found at <https://www.ons.gov.uk/peoplepopulationandcommunity/wellbeing/bulletins/measuringnationalwellbeing/previousReleases?page=1>.

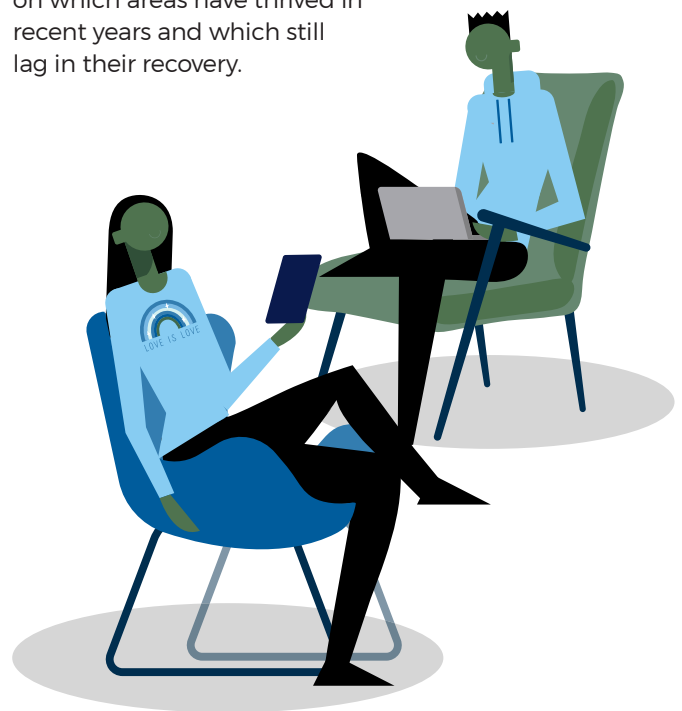
2021, followed by a recovery in 2022. However, the most recent report from the Office of National Statistics⁴, covering the period between March 2022 and April 2023 shows that the recovery trend has been reversed, with the average ratings of personal wellbeing declining across all measures and across most regions. In terms of Life Satisfaction, in England there was a drop of 0.11 points, in Wales of 0.08, and in Northern Ireland of 0.06. In Scotland, Life Satisfaction increased by 0.04 points.⁵

While figures on the average life satisfaction of people are highly informative for individuals and policymakers, they do not capture the wellbeing of those people who are faring particularly poorly in terms of life satisfaction.⁶ In this report we will focus on those people who are particularly deprived in terms of wellbeing and argue that, in the same way in which there is an interest in figures showing the number of people living below the poverty line in economic terms, there should also be an interest in those living below the poverty line in terms of personal wellbeing. As such, we will refer to those individuals with very low levels of life satisfaction as those who are living below the *Happiness Poverty Line* (HPL).

In this report, we will classify people who rate their life satisfaction with a score of 5 *and below* as those who live below the Happiness Poverty Line. Previous research has shown that the exact proportion of the population with very low levels of wellbeing differs between countries.⁷ As such, for the purpose of this report, we emphasise that our definition of the Happiness Poverty Line refers to the United Kingdom alone and may not be appropriate for use in other countries.⁸ However, as we will show in the next section, in the context of the UK, this corresponds to roughly 12% of the total population and is similar in size to the share who is considered to live below the Economic poverty line. Fleche and Layard (2017) use the British Household Panel Survey (BHPS) and classify the bottom 10% of respondents as having very low levels of wellbeing, equivalent to those scoring 3 and below on a 7-point scale in the BHPS data, and similar in magnitude to the share used for defining our threshold.⁹

Identifying how many individuals live below the Happiness Poverty Line and where they are located is important as these individuals may stand to benefit most from policies targeted at increasing life satisfaction. But such attempts are hindered by a lack of understanding of who these people are, where they live, and how their wellbeing has evolved over the past decade. In this report, we will focus on the latter two questions. Understanding the spatial variation in terms of very low levels of wellbeing is also particularly important given the recent negative trends in terms of life satisfaction and the failure of returning to pre-pandemic levels of wellbeing across the country.

In this report we present, alongside the average numbers for life satisfaction across UK areas, the numbers for people living below the Happiness Poverty Line. We will show how these numbers have shifted across all four countries, across Local Authority Districts, across major cities, and across rural and urban areas. Finally, we will also investigate how these figures looked before and after the Covid-19 pandemic to shed more light on the recovery process and, in particular, on which areas have thrived in recent years and which still lag in their recovery.



⁴ Office for National Statistics (ONS) released 7 November 2023, ONS website, statistical bulletin, Personal well-being in the UK: April 2022 to March 2023.

Full report available at: <https://www.ons.gov.uk/peoplepopulationandcommunity/wellbeing/bulletins/measuringnationalwellbeing/april2022tomarch2023>

⁵ Due to the small changes, the estimates are quite imprecise: only the drop in England is statistically significant.

⁶ The ONS reports some figures on people with very low levels of wellbeing, focusing on those with scores between 0 and 4, roughly 5% of the population. We here expand this range to capture a larger group, more aligned with the distribution of income poverty, and focus on the spatial distribution of these people.

⁷ See, for example, Flèche, S., & Layard, R. (2017). Do more of those in misery suffer from poverty, unemployment or mental illness?. *Kyklos*, 70(1), 27-41.

⁸ For context, the global life satisfaction average is roughly 5.5. See Helliwell, J. F., Layard, R., Sachs, J. D., Aknin, L. B., De Neve, J.-E., & Wang, S. (Eds.). (2023). *World Happiness Report 2023* (11th ed.). Sustainable Development Solutions Network.

⁹ Comparatively, Fleche and Layard's (2017) equivalent population shares for those with very low levels of wellbeing in Australia, Germany and the US are 8%, 9%, and 6% respectively.

Data and Methods

To compile this report, figures from the Annual Population Survey (APS) are used.¹⁰ The APS is a representative household study of the UK population, focusing on a broad range of topics with the purpose of providing important information on social and socio-economic variables at local levels. Since April 2011, the APS has introduced the Subjective Wellbeing module, consisting of four questions asked of all respondents aged 16 and older. We will focus on figures from the past 10 years, namely between April 2012 and March 2022, allowing us to provide a comprehensive picture of wellbeing across the UK in the past decade. While the ONS does report average wellbeing levels between April 2022 and March 2023, these data are not yet available to researchers working in the Secure Research Environment, thus limiting our ability to provide the most recent estimates on those living below the Happiness Poverty Line. However, our analysis can easily be updated once these data become available and for all future iterations of the survey.

In this report we will focus on one of the four questions asked in the module, namely Life Satisfaction. We do so in line with much of the literature on subjective wellbeing as evaluative questions such as Life Satisfaction are considered a more appropriate form of wellbeing measurement from a policy perspective. The Life Satisfaction item in the APS asks people to answer, on a scale from 0 to 10 the following question: "Overall, how satisfied are you with your life nowadays?".

Based on this question we will present figures both in terms of averages and in terms of those living below the Happiness Poverty Line. We will define the latter as those who answer 5 or below to the life satisfaction question and will show that this corresponds to roughly the bottom 12% of people across the UK in terms of personal wellbeing. This number is comparable to those living in absolute income poverty in the UK between 2021 and 2022 (namely 13% if housing costs are not accounted for or 17% if they are).¹¹

In all of the tables and figures presented in this report the APS wellbeing weights are used to re-weight our estimates such that they are representative of the UK population. While the wellbeing weights provide a representative picture across geographies, more caution



should be used when looking at figures computed on a relatively small number of responses which may be more sensitive due to small sample sizes.

Across all of our results we present the number of observations on which averages are based and, in all cases, suppress any averages which are computed on 10 observations or less. This is also mentioned in the notes to tables and figures, alongside other important information pertaining to the analysis and the citations for the datasets used.



¹⁰ More information on the data can be found at <https://www.ons.gov.uk/employmentandlabourmarket/peopleinwork/employmentandemployeetypes/methodologies/annualpopulationsurveyapsqmi>.

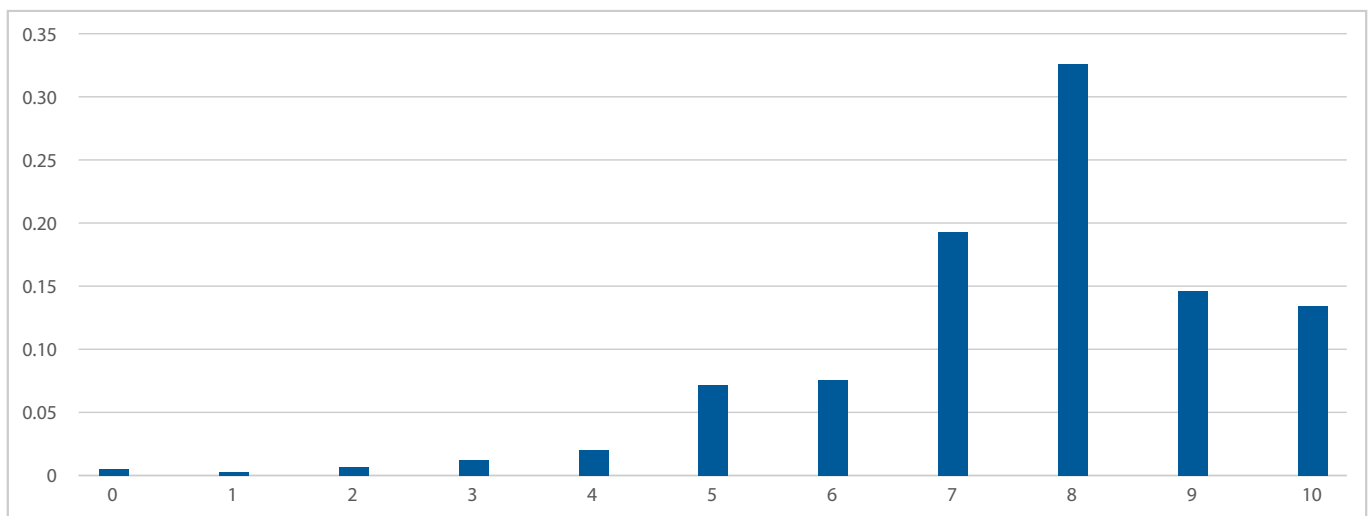
¹¹ Recent figures on people living below the Poverty Line in the UK can be found at <https://commonslibrary.parliament.uk/research-briefings/sn07096/>.

Descriptive Statistics

We begin the analysis by showing the distribution of life satisfaction in the UK across all of the 11 possible answers to the life satisfaction item. Figure 0 below displays on the horizontal axis each of the possible answers to the question, ranging from 0 to 10. On the vertical axis, the share of people choosing each number is shown. The sample sizes pertaining to each of the 11 answers are provided in Table 0 below the figure.

As it can be seen, roughly a third of respondents across all waves chose 8 as an answer and another third choose either 9 or 10. Correspondingly, those defined as living below the Happiness Poverty Line are those picking an answer between 0 and 5. These particularly deprived people in the UK make-up roughly 12% of the population.

Figure 0: The Distribution of Life Satisfaction Answers



Source Annual Population Survey (April 2021- March 2022) DOI <https://doi.org/10.57906/0qpl-6k77>

Notes: Sample restricted to respondents of age 16 years and older. All numbers in this table are aggregated across all respondents and across all available waves. The sample sizes that the numbers in this figure are based on are presented in Table 0 below. There are no instances in which shares and averages in this figure are calculated on less than 10 observations.

Table 0: Sample sizes for each response category shown in Figure 0

Life Satisfaction Response	Sample Size
0	9,638
1	4,768
2	11,446
3	17,841
4	28,983
5	105,483
6	101,147
7	249,984
8	452,698
9	208,920
10	200,395

Source Annual Population Survey (April 2021- March 2022) DOI <https://doi.org/10.57906/0qpl-6k77>

Notes: Sample restricted to respondents of age 18 years and older. All numbers in this table are aggregated across all respondents and across all available waves. The sample sizes that the numbers in Figure 0 are based on are presented in this table. There are no instances in which shares and averages pertaining to Figure 0 are calculated on less than 10 observations.

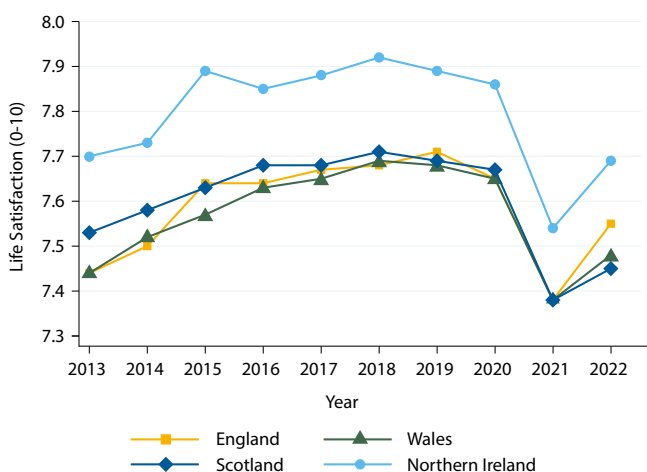
Table 1 below disaggregates the data by the four countries in the UK, namely England, Wales, Scotland, and Northern Ireland. For each country we show both average life satisfaction and the share of people living below the Happiness Poverty Line, each year between 2012 and 2022, as well as the yearly sample sizes on which these numbers are computed. For a better visualisation of these numbers, Figures 1 and 2 plot these trends across countries and across years.

In terms of average life satisfaction, all four countries follow a similar trend, with wellbeing increasing in the first part of the decade, flattening out in the second part of the 2010s, dropping during the pandemic, and partly recovering in the most recent wave. In terms of levels, Northern Ireland is performing the best, while the remaining three countries have slightly lower but similar levels of life satisfaction. Furthermore, the 2022 recovery appears to be slightly stronger in England than in Scotland or Wales.

The share of people living below the Happiness Poverty Line closely mirrors the trends in life satisfaction. In the most recent year, Wales is performing the worst with roughly 14% of its population living below the line, followed by Scotland and England. Again, Northern Ireland is performing the best with roughly 11%.

Figure 1: Trends in Life Satisfaction Across the United Kingdom

Note: Higher levels indicate higher life satisfaction

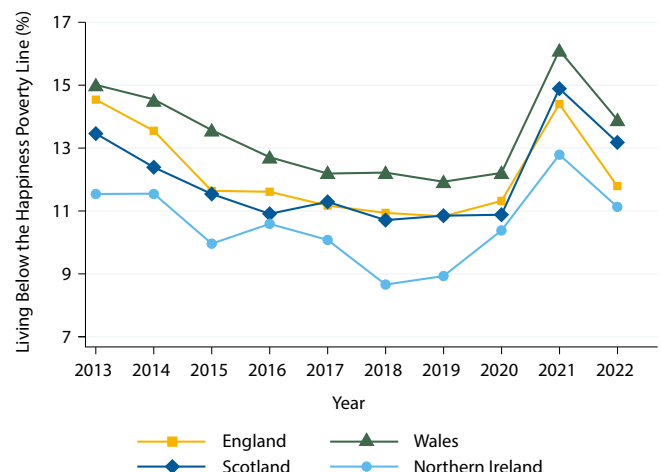


Source Annual Population Survey (April 2012- March 2022) DOI <https://doi.org/10.57906/Oqp1-6k77>

Notes: Sample restricted to respondents of age 16 years and older. All numbers in this table are aggregated across all respondents in each wave. The sample sizes that these trends are based on are presented in Table 1 below. There are no instances in which the averages in this figure are calculated on less than 10 observations.

Figure 2: Trends in People Living Below the Happiness Poverty Line Across the United Kingdom

Note: Higher levels indicate more people living below the Happiness Poverty Line



Source: Source Annual Population Survey (April 2012- March 2022) DOI <https://doi.org/10.57906/Oqp1-6k77>

Notes: Sample restricted to respondents of age 16 years and older. All numbers in this table are aggregated across all respondents in each wave. The sample sizes that these trends are based on are presented in Table 1 below. There are no instances in which the averages in this figure are calculated on less than 10 observations.

Table 1: Averages and Standard Deviations

Country	Year	Life Satisfaction	Living Below HPL (%)	Sample Size
England	2012	7.44	14.54	120008
England	2013	7.50	13.55	120813
England	2014	7.64	11.64	72693
England	2015	7.64	11.61	116031
England	2016	7.67	11.17	109408
England	2017	7.68	10.94	110398
England	2018	7.71	10.83	105974
England	2019	7.65	11.32	99975
England	2020	7.38	14.40	82138
England	2021	7.55	11.79	80271
Wales	2012	7.44	15.01	19515
Wales	2013	7.52	14.55	19696
Wales	2014	7.57	13.57	6563
Wales	2015	7.63	12.71	18734
Wales	2016	7.65	12.19	17044
Wales	2017	7.69	12.22	17566
Wales	2018	7.68	11.93	16906
Wales	2019	7.65	12.21	16044
Wales	2020	7.38	16.11	12210
Wales	2021	7.48	13.90	12077
Scotland	2012	7.53	13.46	23323
Scotland	2013	7.58	12.39	23143
Scotland	2014	7.63	11.54	9491
Scotland	2015	7.68	10.91	21277
Scotland	2016	7.68	11.29	20071
Scotland	2017	7.71	10.71	20828
Scotland	2018	7.69	10.85	20123
Scotland	2019	7.67	10.88	19244
Scotland	2020	7.38	14.89	13787
Scotland	2021	7.45	13.18	12287
Northern Ireland	2012	7.70	11.54	2841
Northern Ireland	2013	7.73	11.55	2720
Northern Ireland	2014	7.89	9.96	2515
Northern Ireland	2015	7.85	10.59	2515
Northern Ireland	2016	7.88	10.08	2902
Northern Ireland	2017	7.92	8.66	3175
Northern Ireland	2018	7.89	8.93	4125
Northern Ireland	2019	7.86	10.38	5219
Northern Ireland	2020	7.54	12.79	3390
Northern Ireland	2021	7.69	11.13	4263

Source Annual Population Survey (April 2012- March 2022) DOI <https://doi.org/10.57906/0qp1-6k77>

Notes: Sample restricted to respondents of age 16 years and older. All numbers in this table are aggregated across all respondents in each pertaining wave. There are no instances in which shares and averages displayed in this table are calculated on less than 10 observations.

Life Satisfaction and Living Below the Happiness Poverty Line Across Areas

In this section we investigate how wellbeing in the UK differs across countries, across Local Authority Districts, across major cities, and across rural and urban areas. The analysis at the country level shows numbers for all four countries, while for Local Authority Districts we present numbers for England, Wales, and Scotland alone, due to area identifiers for Northern Ireland not being available in the Secure Research Environment. For similar reasons, our analysis at the city level is based on England and Wales alone, as is the analysis across rural and urban areas.

Table 2 below shows that in the year ending March 2022, life satisfaction was highest in Northern Ireland, at 7.69, and lowest in Scotland at 7.45. In terms of changes over the past decade, England has performed the best, with an increase of 0.1 points, while Scotland has performed the worst with not only the lowest level of Life Satisfaction in 2022, but also the biggest drop since 2012 at 0.08 points. For context, a 0.1-point increase in life satisfaction is equivalent to 6% of a standard deviation at the individual level, but 42% of a standard deviation in wellbeing at the level of the Local Authority District, making it a sizable increase.

In terms of the share living below the Happiness Poverty Line, Northern Ireland performs the best with only 11% of its population, while Wales performs the worst with nearly 14%. Over the past decade England has improved the most with 2.75% fewer people living below the line than a decade ago, while Scotland has improved the least with only 0.28% fewer.

Table 2: Life Satisfaction Across Regions (2022)

Country	Life Satisfaction	Change	Living Below HPL (%)	Change (%)	Sample Size
Scotland	7.45	-0.080	13.18	-0.28	12287
Wales	7.48	0.035	13.90	-1.11	12077
England	7.55	0.103	11.79	-2.75	80271
Northern Ireland	7.69	-0.010	11.13	-0.41	4263

Source Annual Population Survey (April 2012- March 2022) DOI <https://doi.org/10.57906/0qp1-6k77>

Notes: Sample restricted to respondents aged 16 years old and older. All numbers in this table are aggregated at the level of the country in the year ending March 2022. The changes are calculated on the interval between April 2012 and March 2022. The sample sizes that the numbers are based on are presented in the last column. There are no instances in which shares and averages in this table are calculated on less than 10 observations.

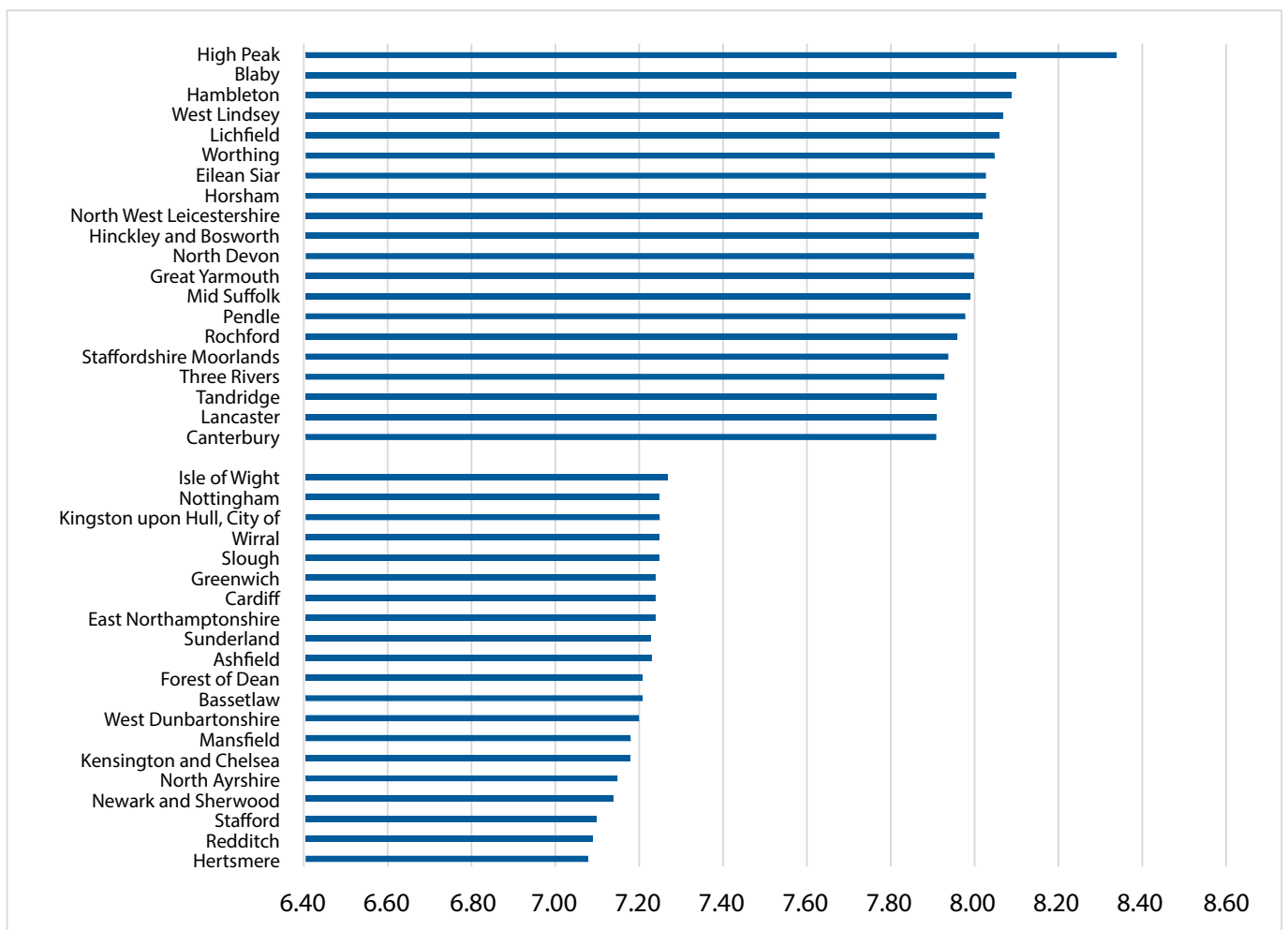


We now turn to results at the level of the Local Authority District, covering 350 areas in England, Wales, and Scotland. Table A.1 in the Appendix shows the average life satisfaction and the share of people living below the Happiness Poverty Line in each area in the most recent wave, namely between April 2021 and March 2022. It also displays the changes in both measures over the past decade, as well as the sample sizes on which the numbers are calculated.

Figure 3 below plots the average life satisfaction in the 20 best and worst performing areas in the year ending March 2022. The corresponding sample sizes underlying the figure can be found in Table A.1 for each area. To avoid focusing on areas with a small number of observations, we exclude the 10% smallest Local Authority Districts in terms of sample size from Figure 1, but they can still be found in Table A.1. Life Satisfaction is highest in High Peak with nearly 8.5 on average, and lowest in Hertsmere with just under 7.1. This shows that there is considerable variation across Local Authority Districts in terms of wellbeing.

Figure 3: The Best and Worst Performing Local Authority Districts - Life Satisfaction (2022)

Note: a larger bar corresponds to a better outcome



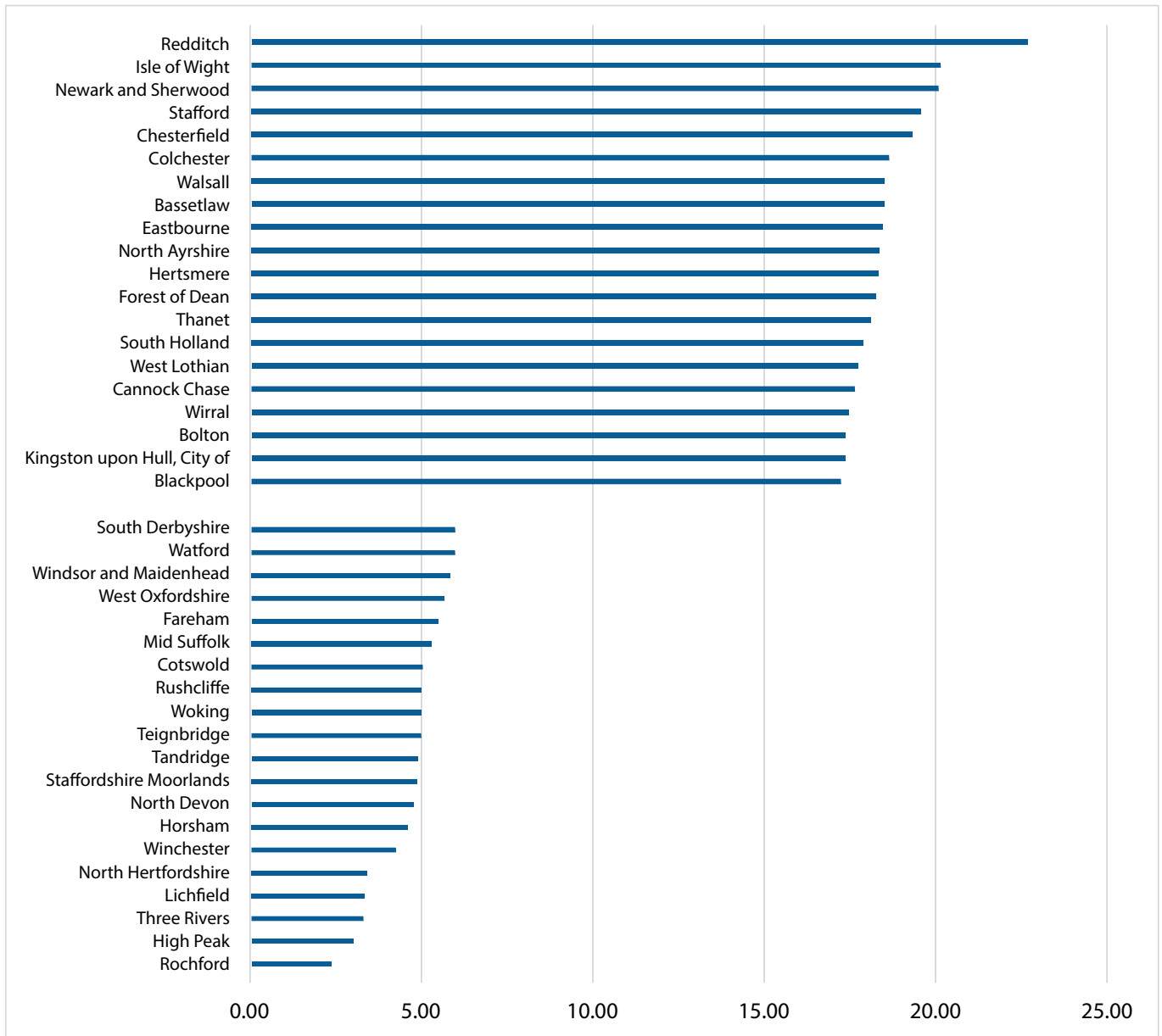
Source Annual Population Survey (April 2021- March 2022) DOI <https://doi.org/10.57906/0qp1-6k77>

Notes: Sample restricted to respondents of age 16 years and older. All numbers in this Figure are aggregated across all respondents in the wave ending in March 2022. The sample sizes that these numbers are based on are presented in Table A.1 in the Appendix. There are no instances in which the numbers in this Figure are calculated on less than 10 observations. Local Authority Districts with a sample size falling in the bottom 10% of areas are not plotted in this figure, but the full list is displayed in table A.1. These numbers are based on areas in England, Wales, and Scotland.

In Figure 4 we perform the same exercise for the 20 best and worst performing areas in terms of the share of their population living below the Happiness Poverty Line. Again, a large level of spatial variation is found. In Rochford only 2.4% of people live below the Happiness Poverty Line while in Redditch 22.7% do so, a difference of a factor of 10.

Figure 4: The Best and Worst Performing Local Authority Districts - Living Below HPL (2022)

Note: a larger bar corresponds to a worse outcome



Source Annual Population Survey (April 2021- March 2022) DOI <https://doi.org/10.57906/0qp1-6k77>

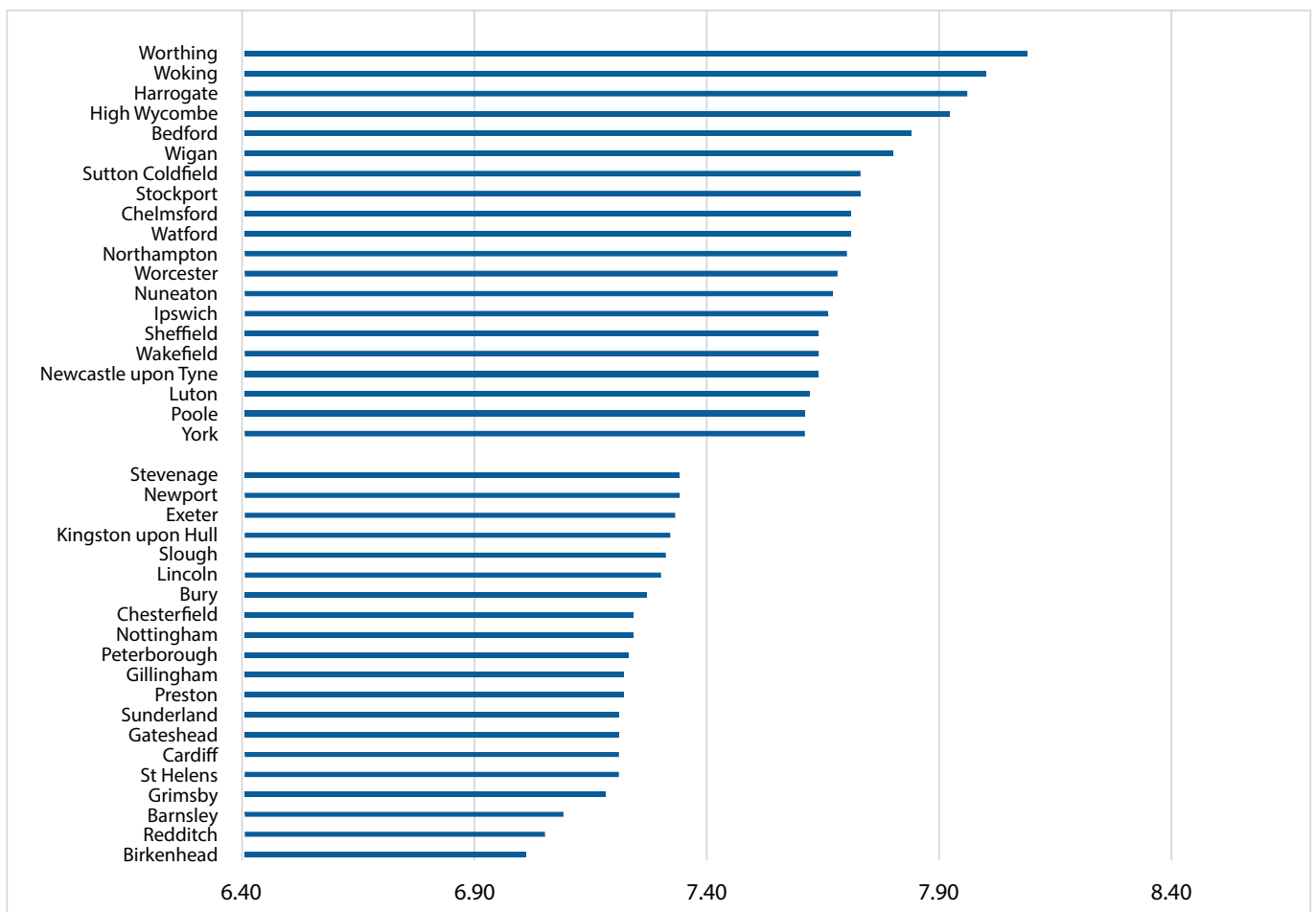
Notes: Sample restricted to respondents of age 16 years and older. All numbers in this Figure are aggregated across all respondents in the wave ending in March 2022. The sample sizes that these numbers are based on are presented in Table A.1 in the Appendix. There are no instances in which the numbers in this Figure are calculated on less than 10 observations. Local Authority Districts with a sample size falling in the bottom 10% of areas are not plotted in this figure, but the full list is displayed in table A.1. These numbers are based on areas in England, Wales, and Scotland.

In Figures 5 and 6 the same exercise is performed for major cities across England and Wales, where the former looks at life satisfaction differences and the latter at differences in the share of people living below the Happiness Poverty Line. Table A.2 in the appendix provides these numbers for the full list of major cities, as well as the corresponding sample sizes for each area (including those plotted in Figures 5 and 6). Again, we do not plot areas with sample sizes in the bottom decile, but they are listed in Table A.2.

In general, the share of people living below the line appears to be slightly higher in cities than in Local Authority Districts. In terms of Life Satisfaction, the best performing cities such as Worthing, Woking, and Harrogate all score in the region of 8. While the worst performing ones such as Birkenhead, Redditch and Barnsley have an average life satisfaction of a whole point lower. As seen in Figure 4, Birkenhead and Redditch also perform poorly in terms of the share of people living below the Happiness Poverty Line, with 1 in 4 people there living below the line - nearly 5% more than the next city. On the other hand, Watford, Woking, and High Wycombe perform very well with only 5-6% of their residents living below the Happiness Poverty Line.

Figure 5: The Best and Worst Performing Cities - Life Satisfaction (2022)

Note: a larger bar corresponds to a better outcome

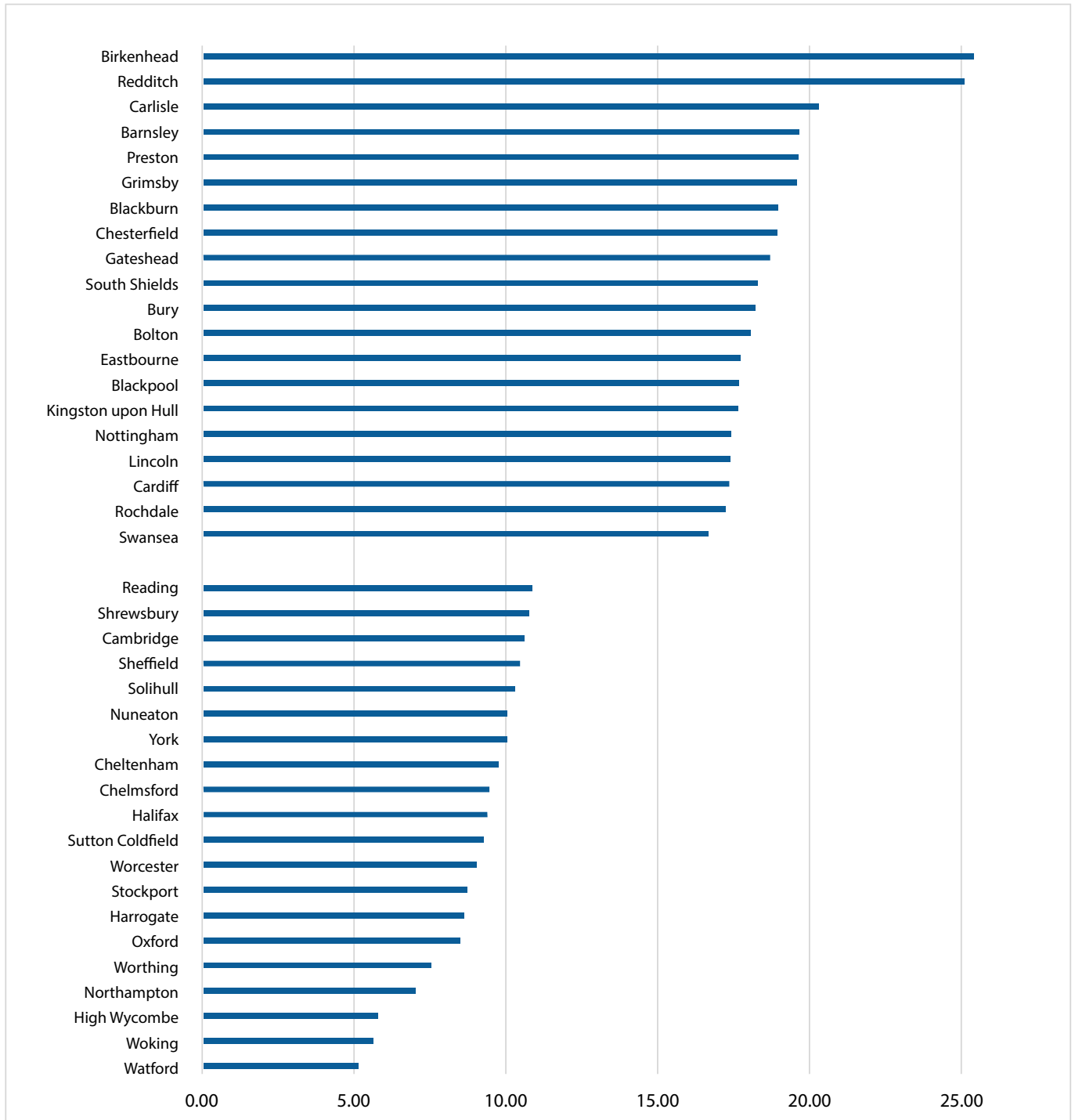


Source Annual Population Survey (April 2021- March 2022) DOI <https://doi.org/10.57906/0qp1-6k77>

Notes: Sample restricted to respondents of age 16 years and older. All numbers in this Figure are aggregated across all respondents in the wave ending in March 2022. The sample sizes that these numbers are based on are presented in Table A.2 in the Appendix. There are no instances in which the numbers in this Figure are calculated on less than 10 observations. Cities with a sample size falling in the bottom 10% of areas are not plotted in this figure, but the full list is displayed in table A.2. These numbers are based on areas in England and Wales.

Figure 6: The Best and Worst Performing Cities - Living Below HPL (2022)

Note: a larger bar corresponds to a worse outcome



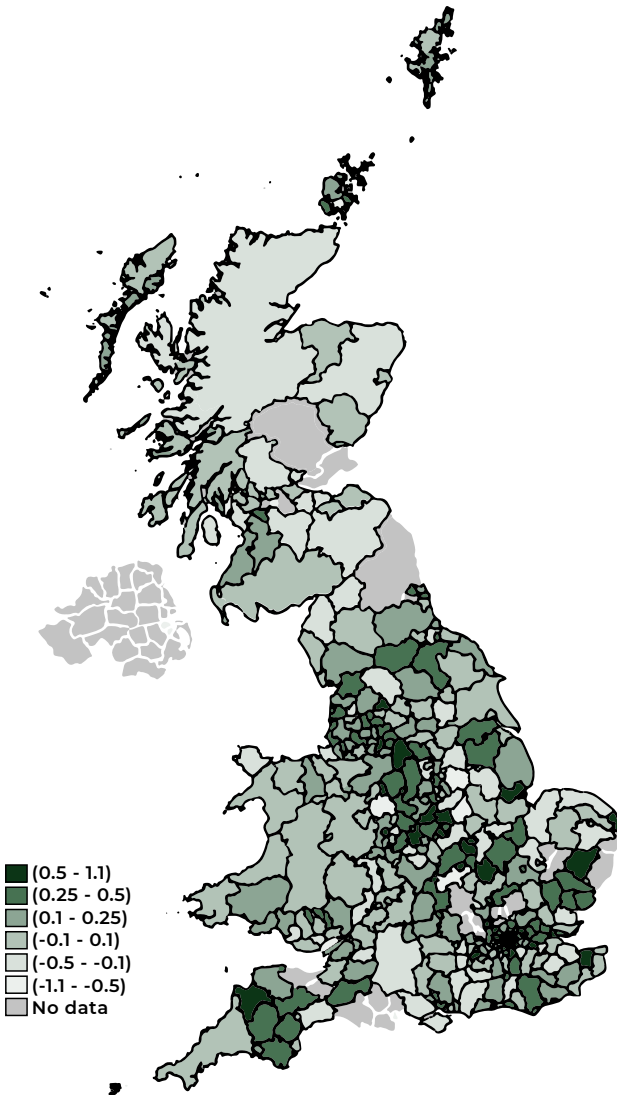
Source Annual Population Survey (April 2021- March 2022) DOI <https://doi.org/10.57906/0qp1-6k77>

Notes: Sample restricted to respondents of age 16 years and older. All numbers in this Figure are aggregated across all respondents in the wave ending in March 2022. The sample sizes that these numbers are based on are presented in Table A.2 in the Appendix. There are no instances in which the numbers in this Figure are calculated on less than 10 observations. Cities with a sample size falling in the bottom 10% of areas are not plotted in this figure, but the full list is displayed in table A.2. These numbers are based on areas in England and Wales.

Figure 7 below plots how the average life satisfaction has changed over the past decade. A darker shade of green corresponds to a higher increase in life satisfaction in the past decade. Similarly, Figure 8 plots the decade-long change in the share of people living below the Happiness Poverty Line, where a darker shade of blue indicates a higher increase in the share of people living below the Happiness Poverty Line over the past ten years.

Figure 7: Changes in Life Satisfaction Across Areas (2012-2022)

Note: A darker shade indicates a better outcome

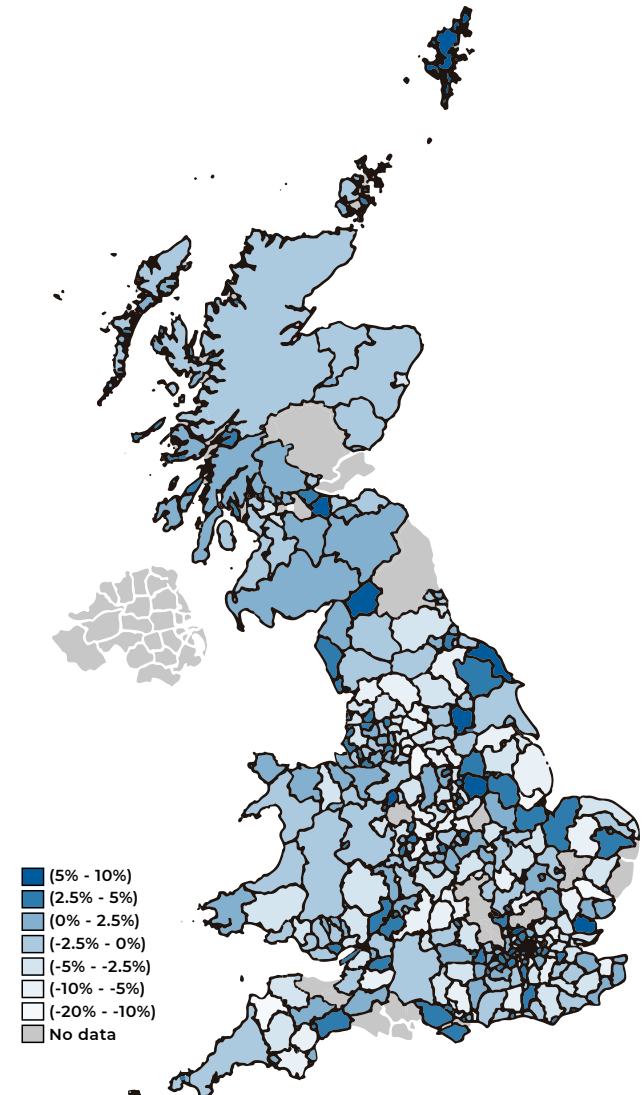


Source Annual Population Survey (April 2012- March 2022) DOI <https://doi.org/10.57906/0qp1-6k77>

Notes: Sample restricted to respondents of age 16 years and older. All numbers in this figure are aggregated across all respondents in an area. The sample sizes that these numbers are based on are presented in Table A.1 in the Appendix. There are no instances in which the numbers in this Figure are calculated on less than 10 observations. These numbers are based on areas in England, Scotland, and Wales.

Figure 8: Changes in the Share Living Below Happiness Poverty Line Across Areas (2012-2022)

Note: A darker shade indicates a worse outcome



Source Annual Population Survey (April 2012- March 2022) DOI <https://doi.org/10.57906/0qp1-6k77>

Notes: Sample restricted to respondents of age 16 years and older. All numbers in this figure are aggregated across all respondents in an area. The sample sizes that these numbers are based on are presented in Table A.1 in the Appendix. There are no instances in which the numbers in this Figure are calculated on less than 10 observations. These numbers are based on areas in England, Scotland, and Wales.

Finally, we investigate how figures look across urban and rural areas. Overall, life satisfaction in the most recent wave is lower in urban areas than in rural ones, with a difference of roughly 0.3-0.4 points on the life satisfaction scale. Similarly, the share living below the Happiness poverty Line is 2-3% higher in urban than in rural areas. However, trends over the past decade show that the gap between urban and rural residents may be closing in terms of wellbeing. Life satisfaction increased the most in major urban conurbations, by 0.165 life satisfaction points. Similarly, the share of people living below the line has decreased more in urban areas than in rural ones, although the trends are positive across the board. This indicates that if the gap between rural and urban areas is closing, that is because cities are performing relatively better rather than rural areas worsening in terms of wellbeing.¹²

Table 3: Life Satisfaction Across Rural and Urban Areas

Rural and Urban Areas	Life Satisfaction	Change	Living Below HPL (%)	Change (%)	Sample Size
Urban city and town in a sparse setting	7.33	-0.269	17.14	4.46	424
Urban minor conurbation	7.47	0.076	12.78	-3.91	2863
Urban major conurbation	7.47	0.165	12.87	-4.04	23279
Urban city and town	7.53	0.082	12.79	-1.79	46117
Rural town and fringe	7.66	0.068	10.69	-2.62	9307
Rural town and fringe in a sparse setting	7.67	0.070	10.80	-2.82	940
Rural village and dispersed	7.80	0.059	9.51	-1.15	7582
Rural village and dispersed in a sparse setting	7.86	0.122	10.16	-1.00	1835



Source Annual Population Survey (April 2012- March 2022) DOI <https://doi.org/10.57906/0qpl-6k77>

Notes: Sample restricted to respondents aged 16 years old and older. All numbers in this table are aggregated at the level of the rural or urban classification in the year ending March 2022. The changes are calculated on the interval between April 2012 and March 2022. The sample sizes that the numbers are based on are presented in the last column. There are no instances in which shares and averages in this Table are calculated on less than 10 observations. These numbers pertain to areas in England and Wales.

¹² One exception in Table 3 is seen for the "Urban city and town in a sparse setting" category, although the numbers here are based on very small sample sizes comparatively and should be interpreted with caution.

Before and After Covid-19

In this section we turn to differences across areas before and after the Covid-19 pandemic. Specifically, we compare wellbeing in the first seven waves (between April 2012 and March 2019) and in the final three waves (between April 2019 and March 2022).

Table 4 shows the pre-pandemic trends across the four countries while Table 5 shows the corresponding figures during and after the onset of the Covid-19 pandemic. Between 2012 and 2019, life satisfaction increased markedly in all four countries, with the highest jump in England at 0.27 points. Similarly, the share of people living below the Happiness Poverty Line dropped across the board with decreases between 2.6% in Scotland and 3.7% in England. The trends after 2019 show a complete reversal of this positive process. Life satisfaction dropped in all countries, with the highest drop in Scotland (0.224) and the lowest in England (0.108). Similarly, the share living below the line increased in all countries, but it jumped the most in Scotland where 2.3% more of its population was living below the Happiness Poverty Line in 2022 than in 2019. England witnessed the smallest increase at 0.5%.

Table 4: Life Satisfaction Across Regions (April 2012- March 2019)

Country	Life Satisfaction	Change	Living Below HPL (%)	Change (%)	Sample Size
Wales	7.68	0.240	11.93	-3.08	16906
Scotland	7.69	0.168	10.85	-2.61	20123
England	7.71	0.267	10.83	-3.71	105974
Northern Ireland	7.89	0.194	8.93	-2.60	4125

Source Annual Population Survey (April 2012- March 2019) DOI <https://doi.org/10.57906/0qpi-6k77>

Notes: Sample restricted to respondents aged 16 years old and older. All numbers in this table are aggregated at the level of the country in the year ending March 2019. The changes are calculated on the interval between April 2012 and March 2019. The sample sizes that the numbers are based on are presented in the last column. There are no instances in which shares and averages in this Table are calculated on less than 10 observations.

Table 5: Life Satisfaction Across Regions (April 2019- March 2022)

Country	Life Satisfaction	Change	Living Below HPL (%)	Change (%)	Sample Size
Scotland	7.45	-0.224	13.18	2.30	12287
Wales	7.48	-0.173	13.90	1.69	12077
England	7.55	-0.108	11.79	0.47	80271
Northern Ireland	7.69	-0.167	11.13	0.75	4263

Source Annual Population Survey (April 2019- March 2022) DOI <https://doi.org/10.57906/0qpi-6k77>

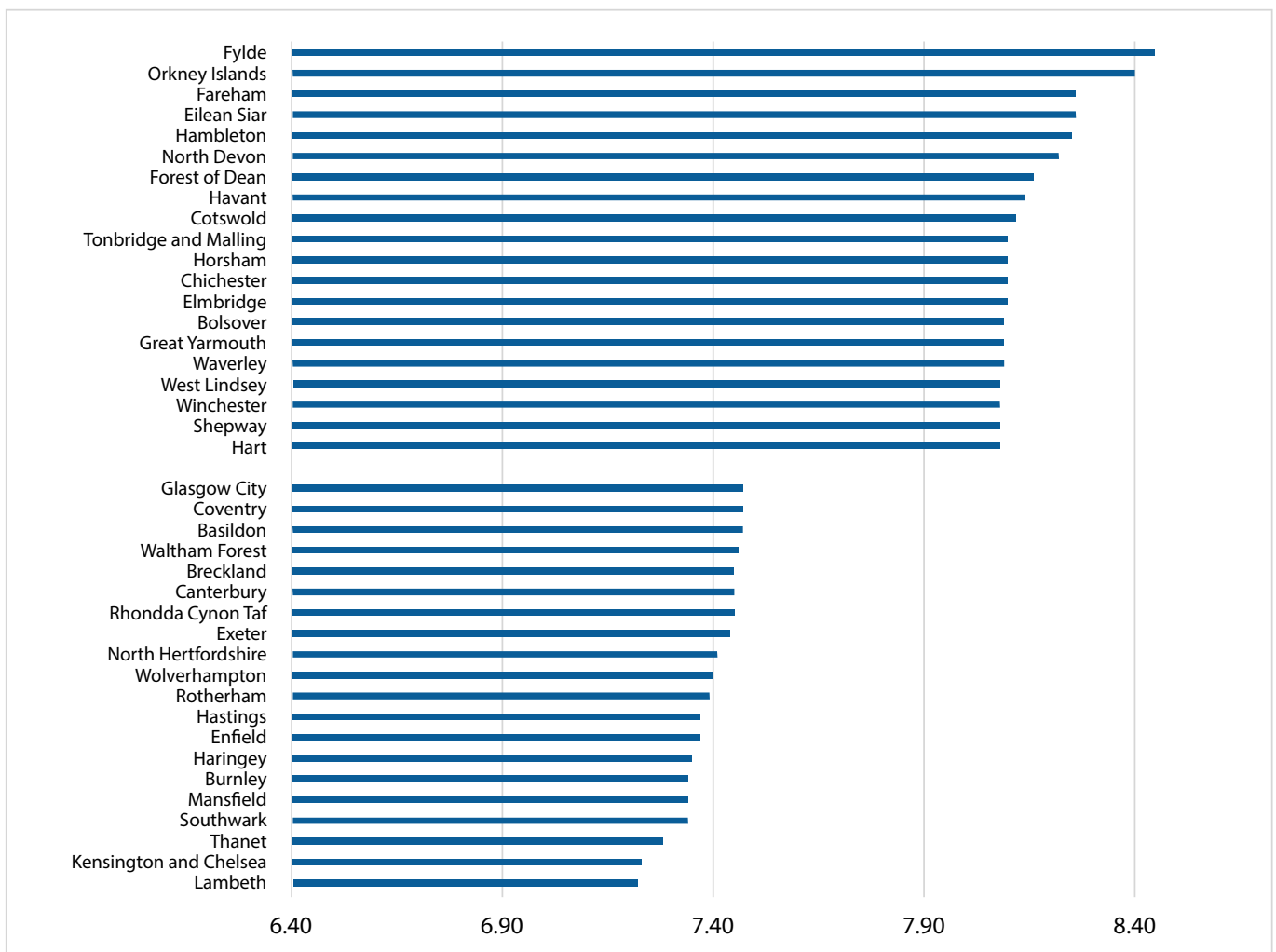
Notes: Sample restricted to respondents aged 16 years old and older. All numbers in this table are aggregated at the level of the country in the year ending March 2022. The changes are calculated on the interval between April 2019 and March 2022. The sample sizes that the numbers are based on are presented in the last column. There are no instances in which shares and averages in this Table are calculated on less than 10 observations.

Figures 9,10, 11, and 12 show the best and worst performing Local Authority Districts and Cities before the start of the pandemic. Figures 9 and 11 show this for average life satisfaction while Figures 10 and 12 show this for the share of people living below the Happiness Poverty Line. Tables A.3, A.4, A.5, and A.6 in the Appendix show the full list of Local Authority Districts and Cities, along with the corresponding changes over the past seven waves and the sample sizes on which numbers are computed for each area (including those plotted in the figures below).

There is a partial overlap between pre and post pandemic areas performing particularly well or particularly poorly. This indicates that while some areas have improved dramatically in a short period of time, others have worsened consistently while others appear to be constant in either thriving or suffering. More research is needed to understand what emerging areas are doing well or what worsening ones could do in order to improve again.

Figure 9: The Best and Worst Performing Local Authority Districts - Life Satisfaction (2019)

Note: a larger bar corresponds to a better outcome

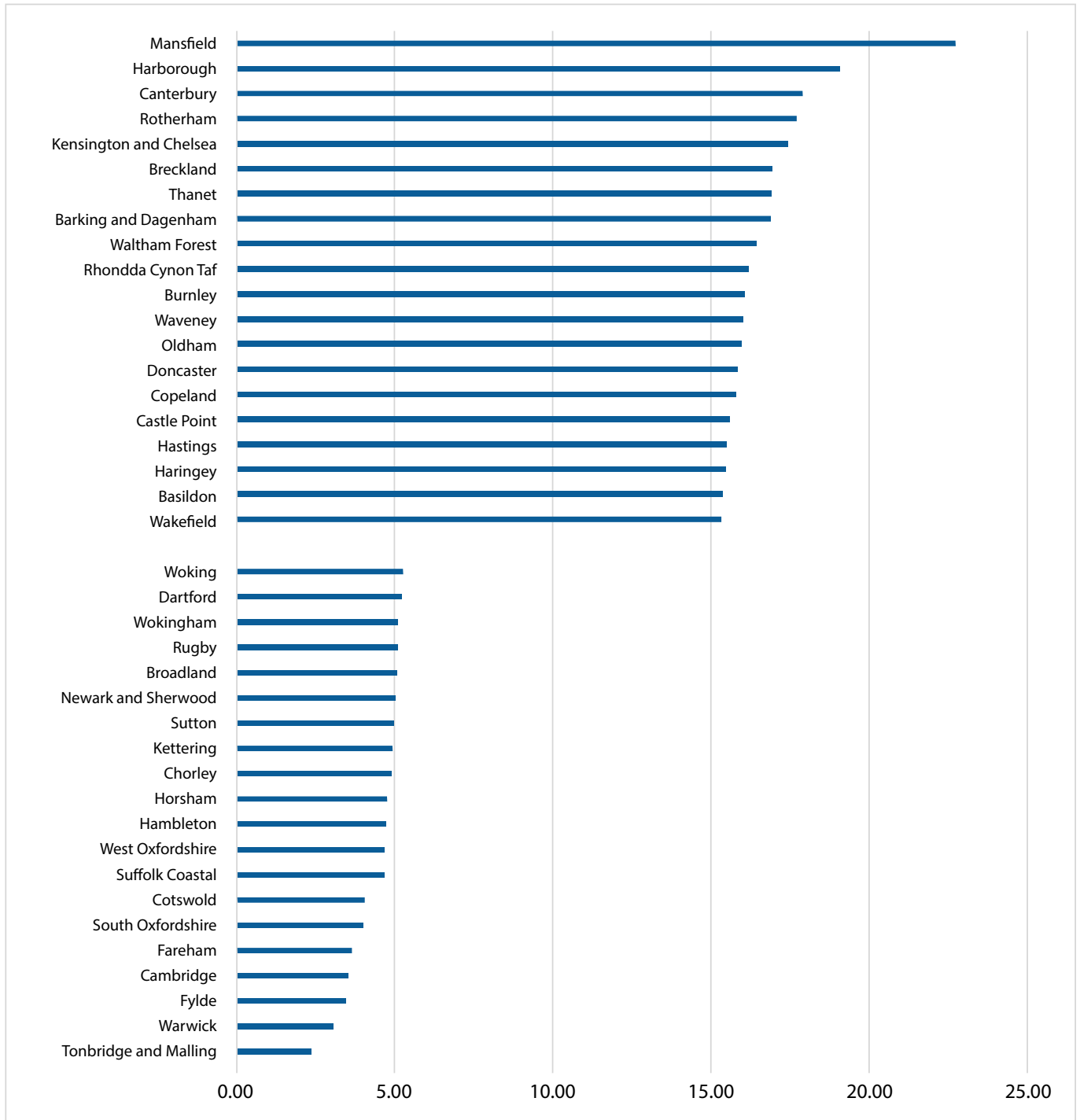


Source Annual Population Survey (April 2018- March 2019) DOI <https://doi.org/10.57906/0qp1-6k77>

Notes: Sample restricted to respondents of age 16 years and older. All numbers in this figure are aggregated across all respondents in the wave ending in March 2019. The sample sizes that these numbers are based on are presented in Table A.3 in the Appendix. There are no instances in which the numbers in this Figure are calculated on less than 10 observations. Local Authority Districts with a sample size falling in the bottom 10% of areas are not plotted in this figure, but the full list is displayed in Table A.3. These numbers are based on areas in England, Wales, and Scotland.

Figure 10: The Best and Worst Performing Local Authority Districts - Living Below HPL (2019)

Note: a larger bar corresponds to a worse outcome

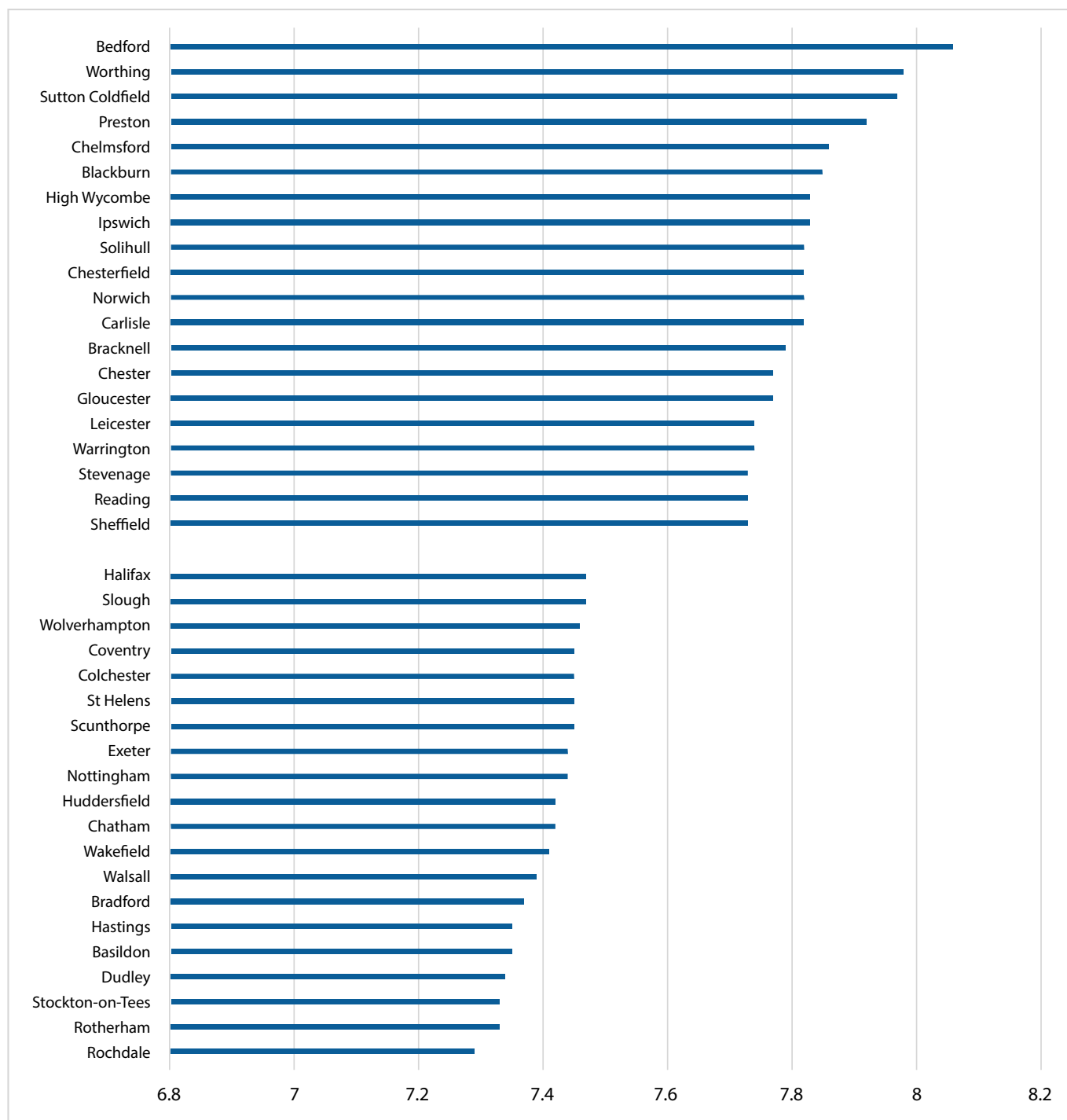


Source Annual Population Survey (April 2018- March 2019) DOI <https://doi.org/10.57906/0qp1-6k77>

Notes: Sample restricted to respondents of age 16 years and older. All numbers in this figure are aggregated across all respondents in the wave ending in March 2019. The sample sizes that these numbers are based on are presented in Table A.3 in the Appendix. There are no instances in which the numbers in this Figure are calculated on less than 10 observations. Local Authority Districts with a sample size falling in the bottom 10% of areas are not plotted in this figure, but the full list is displayed in Table A.3. These numbers are based on areas in England, Wales, and Scotland.

Figure 11: The Best and Worst Performing Cities - Life Satisfaction (2019)

Note: a larger bar corresponds to a better outcome

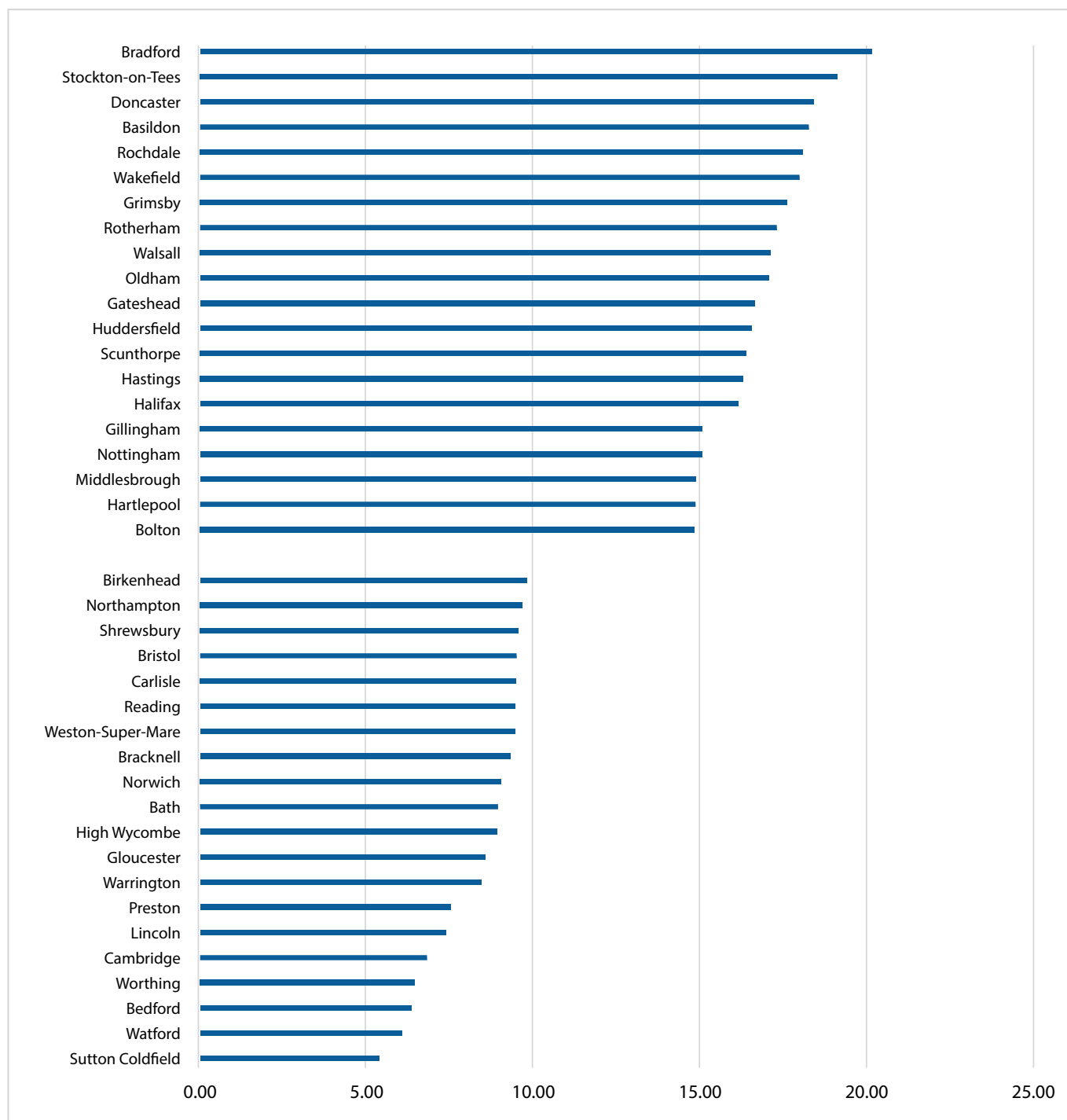


Source Annual Population Survey (April 2018- March 2019) DOI <https://doi.org/10.57906/0qp1-6k77>

Notes: Sample restricted to respondents of age 16 years and older. All numbers in this figure are aggregated across all respondents in the wave ending in March 2019. The sample sizes that these numbers are based on are presented in Table A.5 in the Appendix. There are no instances in which the numbers in this Figure are calculated on less than 10 observations. Cities with a sample size falling in the bottom 10% of areas are not plotted in this figure, but the full list is displayed in table A.5. These numbers are based on areas in England and Wales.

Figure 12: The Best and Worst Performing Cities - Living Below HPL (2019)

Note: a larger bar corresponds to a worse outcome



Source Annual Population Survey (April 2018- March 2019) DOI <https://doi.org/10.57906/0qp1-6k77>

Notes: Sample restricted to respondents of age 16 years and older. All numbers in this figure are aggregated across all respondents in the wave ending in March 2019. The sample sizes that these numbers are based on are presented in Table A.5 in the Appendix. There are no instances in which the numbers in this Figure are calculated on less than 10 observations. Cities with a sample size falling in the bottom 10% of areas are not plotted in this figure, but the full list is displayed in table A.5. These numbers are based on areas in England and Wales.

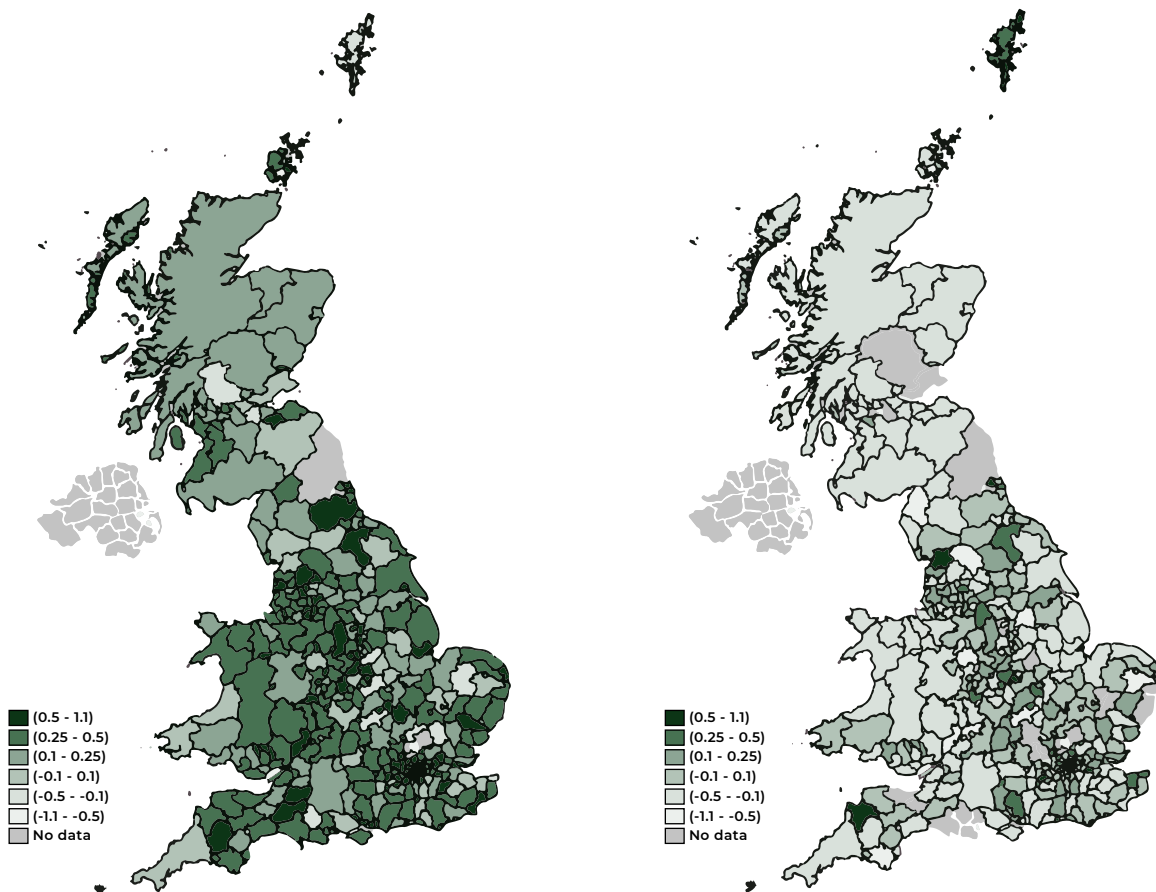
Figures 13 and 14 below plot changes in Life Satisfaction and in the share of people living below the Happiness Poverty Line across areas before and after the Covid-19 Pandemic on the UK map. The left-hand side panel in Figure 13 shows the change in average Life Satisfaction across areas between April 2012 and March 2019, covering the pre-pandemic period. The right-hand side panel shows the change in Life Satisfaction across areas between April 2019 and March 2022, covering the pandemic and post-pandemic recovery period. Figure 14 repeats this exercise for the share of people living below the Happiness Poverty Line in each area, with the left-hand side panel focusing on pre-pandemic changes while the right-hand side panel focuses on post-pandemic numbers.

For both measures we see a worsening of wellbeing across many UK areas since the pandemic. In Figure 13, the darker shade of green in the left panel indicates that Life Satisfaction was higher in many Local Authority Districts in the pre-pandemic period. Similarly, in Figure 14, the darker shade of blue in the right panel indicates that there is a higher share of people living below the Happiness Poverty line in the post-pandemic period.

While this question is beyond the scope of this report, the figures in this document can help policy makers focus on areas that need additional support in terms of wellbeing or on those who have improved markedly and try to replicate their successful strategies. We believe this report to be a first step towards guiding stakeholders in the right direction.

Figure 13: Changes in Life Satisfaction Across Areas Before (Left) and After (Right) the Pandemic

Note: A darker shade indicates a better outcome

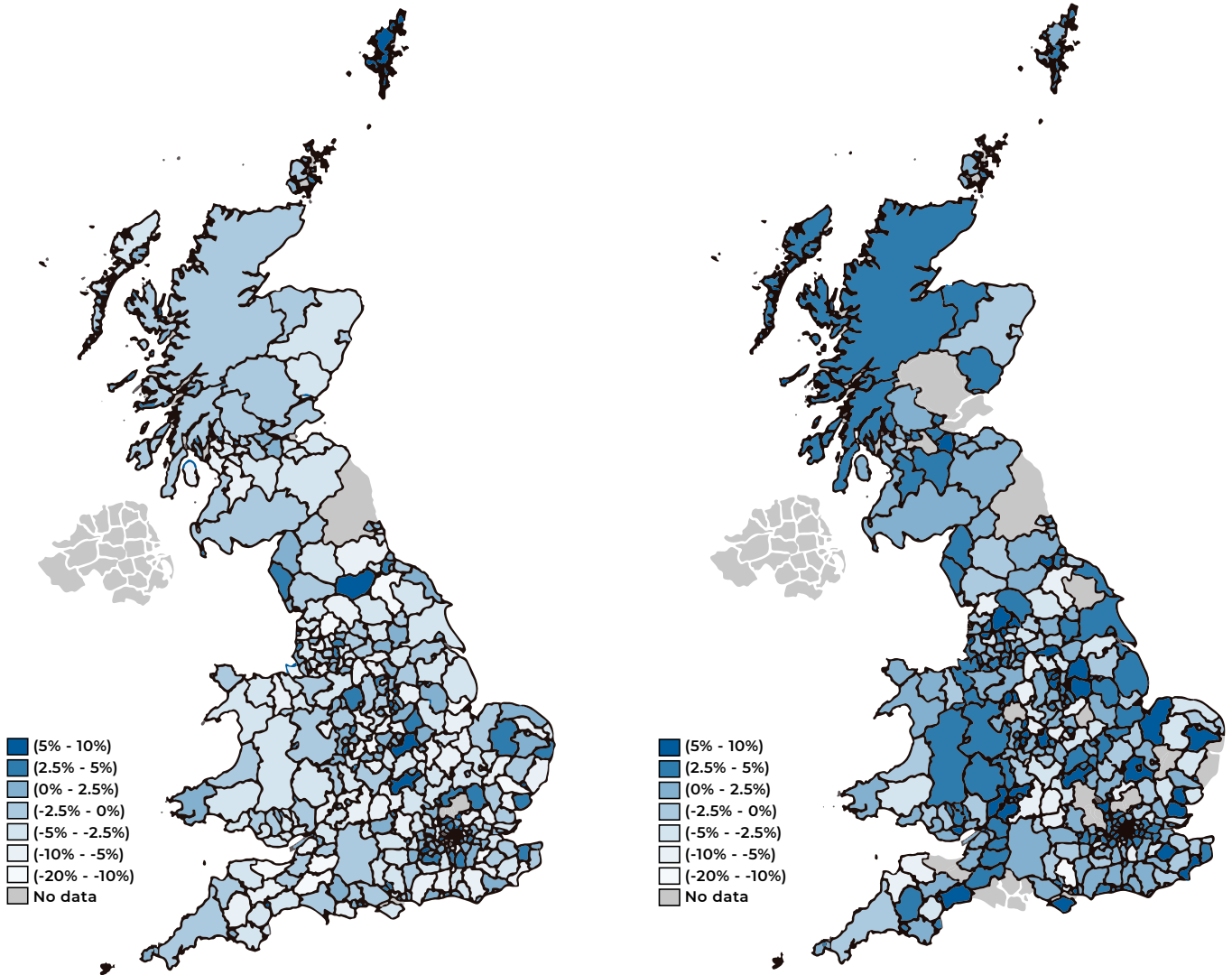


Source Annual Population Survey (April 2012- March 2022) DOI <https://doi.org/10.57906/0qp1-6k77>

Notes: Sample restricted to respondents of age 16 years and older. All numbers in this figure are aggregated across all respondents in in an area. The sample sizes that these numbers are based on are presented in Table A.1 in the Appendix. There are no instances in which the numbers in this Figure are calculated on less than 10 observations. These numbers are based on areas in England, Scotland, and Wales.

Figure 14: Changes in the Share Living Below the Happiness Poverty Line Across Areas Before (Left) and After (Right) the Pandemic

Note: A darker shade indicates a worse outcome



Source Annual Population Survey (April 2012- March 2022) DOI <https://doi.org/10.57906/0qpl-6k77>

Notes: Sample restricted to respondents of age 16 years and older. All numbers in this figure are aggregated across all respondents in an area. The sample sizes that these numbers are based on are presented in Table A.1 in the Appendix. There are no instances in which the numbers in this Figure are calculated on less than 10 observations. These numbers are based on areas in England, Scotland, and Wales.

Finally, we also investigate how rural-urban differences have evolved before and after the pandemic. Tables 6 and 7 below show that the trends are similar to the rest of the tables: wellbeing was increasing across the board between April 2012 and March 2019 and has dropped in most areas between April 2019 and March 2022. One exception is the category of *“Rural town and fringe in a sparse setting”*, where life satisfaction has actually increased in recent years and the share of people living below the line has dropped. Nonetheless, differences between rural and urban areas pre-and post-pandemic in terms of trends are less-well pronounced.

Table 6: Life Satisfaction Across Rural and Urban Areas (April 2012- March 2019)

Rural and Urban Areas	Life Satisfaction	Change	Living Below HPL (%)	Change (%)	Sample Size
Urban city and town in a sparse setting	7.57	-0.023	14.97	2.28	570
Urban major conurbation	7.60	0.293	12.40	-4.51	34355
Urban minor conurbation	7.62	0.230	13.34	-3.35	3855
Rural town and fringe in a sparse setting	7.72	0.114	13.54	-0.09	1182
Urban city and town	7.72	0.274	11.03	-3.55	60926
Rural town and fringe	7.86	0.272	9.91	-3.40	11184
Rural village and dispersed	7.99	0.242	8.21	-2.46	8278
Rural village and dispersed in a sparse setting	8.00	0.263	9.21	-1.95	2521



Source Annual Population Survey (April 2012- March 2019) DOI <https://doi.org/10.57906/0qpl-6k77>

Notes: Sample restricted to respondents aged 16 years old and older. All numbers in this table are aggregated at the level of the rural or urban classification in the year ending March 2019. The changes are calculated on the interval between April 2012 and March 2019. The sample sizes that the numbers are based on are presented in the last column. There are no instances in which shares and averages in this Table are calculated on less than 10 observations. These numbers pertain to areas in England and Wales.

Table 7: Life Satisfaction Across Rural and Urban Areas (April 2019- March 2022)

Rural and Urban Areas	Life Satisfaction	Change	Living Below HPL (%)	Change (%)	Sample Size
Urban city and town in a sparse setting	7.33	-0.375	17.14	2.32	424
Urban minor conurbation	7.47	-0.137	12.78	0.41	2863
Urban major conurbation	7.47	-0.071	12.87	0.06	23279
Urban city and town	7.53	-0.135	12.79	1.03	46117
Rural town and fringe	7.66	-0.168	10.69	0.24	9307
Rural town and fringe in a sparse setting	7.67	0.082	10.80	-3.57	940
Rural village and dispersed	7.80	-0.089	9.51	0.70	7582
Rural village and dispersed in a sparse setting	7.86	-0.055	10.16	-0.55	1835



Source Annual Population Survey (April 2019- March 2022) DOI <https://doi.org/10.57906/0qp1-6k77>

Notes: Sample restricted to respondents aged 16 years old and older. All numbers in this table are aggregated at the level of the rural or urban classification in the year ending March 2022. The changes are calculated on the interval between April 2019 and March 2022. The sample sizes that the numbers are based on are presented in the last column. There are no instances in which shares and averages in this Table are calculated on less than 10 observations. These numbers pertain to areas in England and Wales.

Conclusions

This report has investigated how wellbeing is distributed across the UK. It has done so by using a decade of data on life satisfaction and by analysing changes across areas both before and after the onset of the Covid-19 Pandemic.

While average life satisfaction figures have been produced yearly across UK regions and areas, less was known about the geographical distribution of people with very low levels of wellbeing. In this document we have focused on the life satisfaction of people who are scoring particularly poorly on this measure, making up less than 15% of the UK population and have argued that these individuals live below the poverty line in terms of life satisfaction, or what we have referred to as the Happiness Poverty Line throughout this report.

We have shown that the trends in average life satisfaction are broadly mirrored in the trends in the number of people living below the Happiness Poverty Line. While this group was shrinking between 2012 and the mid-2010s, their numbers have stagnated in the second part of the decade and increased markedly during the Pandemic. And while 2022 has shown a partial recovery, the recent 2023 ONS report on average life satisfaction shows a reversal of this recovery. Based on the analysis in this report, we expect that this reversal is also reflected in the number of people living below the Happiness Poverty Line, pushing more and more individuals below the threshold.

This report has also shown a complete list of Local Authority Districts in England, Scotland, and Wales, of major cities in England and Wales, and of rural and urban areas ranked according to the share of people in each area living below the Happiness Poverty Line. While investigating why some areas perform particularly well and others particularly poorly is beyond the scope of this report, the share of people living below the line offers an indication of where investment might be needed or of where success stories can offer important lessons. We believe this to be of great importance to individuals, communities, and policymakers across the country interested in the state of wellbeing and wellbeing-deprivation across the nation.

Notes and Disclosure

This work contains statistical data from ONS which is Crown Copyright. The use of the ONS statistical data in this work does not imply the endorsement of the ONS in relation to the interpretation or analysis of the statistical data. This work uses research datasets which may not exactly reproduce National Statistics aggregates.

The analysis was carried out in the Secure Research Service, part of the Office for National Statistics.

This analysis is based on The Annual Population Survey – UK

DOI: <https://doi.org/10.57906/0qp1-6k77>



Appendix

Table A.1: Life Satisfaction and the Share Living Below the Happiness Poverty Line Across Local Authority Districts

Country	LAD Name	Life Satisfaction	Change	Rank	Living Below HPL (%)	Change (%)	Sample Size
England	High Peak	8.34	1.02	1	3.01	-16.48	93
England	Torridge	8.25	0.73	2	1.68	-12.44	74
Scotland	Orkney Islands	8.17	0.22	3	4.64	-2.29	40
England	Daventry	8.16	0.33	4	7.15	-3.38	75
England	Richmondshire	8.16	0.41	5	6.21	-0.19	58
England	Blaby	8.10	0.42	6	7.49	-3.73	100
England	Hambleton	8.09	0.41	7	6.54	-9.36	98
Scotland	Shetland Islands	8.09	-0.02	8	13.40	6.28	53
England	West Lindsey	8.07	0.43	9	8.33	-4.26	123
England	Lichfield	8.06	0.36	10	3.33	-7.40	97
England	Worthing	8.05	0.80	11	7.09	-8.54	105
England	Dartford	8.05	0.30	12	4.95	-5.24	58
Scotland	Eilean Siar	8.03	-0.01	13	9.33	-0.94	231
England	Horsham	8.03	0.22	14	4.60	-6.58	101
England	North West Leicestershire	8.02	0.57	15	8.77	-5.53	99
England	Hinckley and Bosworth	8.01	0.30	16	6.97	-2.48	144
England	Kettering	8.01	0.64	17	11.39	0.11	81
England	Surrey Heath	8.01	0.34	18	5.84	-2.22	77
England	North Devon	8.00	0.15	19	4.76	-3.78	171
England	Great Yarmouth	8.00	0.70	20	7.28	-8.44	83
England	Mid Suffolk	7.99	0.51	21	5.29	-3.66	98
England	Pendle	7.98	0.97	22	10.55	-9.80	87
England	Rochford	7.96	0.09	23	2.37	-8.23	84
England	Staffordshire Moorlands	7.94	0.38	24	4.87	-3.20	107
England	Three Rivers	7.93	0.50	25	3.30	-11.50	96
England	Charnwood	7.91	0.70	26	9.53	-5.24	193
England	Canterbury	7.91	0.54	27	5.99	-7.16	185
England	Lancaster	7.91	0.26	28	6.50	-7.02	172
England	Tandridge	7.91	0.31	29	4.88	-3.82	96
England	North Hertfordshire	7.90	0.39	30	3.41	-6.44	123
England	Uttlesford	7.90	0.00	31	6.77	1.66	102
England	Castle Point	7.90	0.59	32	6.37	-9.27	65
England	Bedford	7.89	0.56	33	7.35	-5.05	232
Scotland	East Renfrewshire	7.88	0.38	34	7.37	-4.34	341
England	Fylde	7.88	0.48	35	8.41	-3.27	103
England	Winchester	7.87	0.24	36	4.26	-7.21	112
England	Mole Valley	7.87	0.25	37	8.58	-1.22	90
England	West Devon	7.87	0.41	38	9.33	-2.83	61
England	Stratford-on-Avon	7.86	0.21	39	8.35	-4.26	225
England	Harrogate	7.86	0.12	40	7.37	-4.73	208

Country	LAD Name	Life Satisfaction	Change	Rank	Living Below HPL (%)	Change (%)	Sample Size
England	South Lakeland	7.86	0.11	41	9.74	-1.24	203
England	Fareham	7.83	0.24	42	5.48	-5.94	194
England	South Oxfordshire	7.83	0.20	43	6.59	-4.06	170
England	Arun	7.83	0.17	44	6.24	-1.36	151
England	Cherwell	7.83	0.39	45	6.32	-8.77	150
England	Northampton	7.82	0.53	46	7.45	-6.49	169
England	Rother	7.82	0.24	47	10.21	-1.27	157
England	Cotswold	7.82	0.05	48	5.03	-6.94	139
England	Teignbridge	7.80	0.29	49	4.98	-8.70	188
England	Braintree	7.80	0.42	50	6.87	-7.98	134
England	Bromsgrove	7.80	0.25	51	9.24	-3.41	119
England	Babergh	7.80	0.37	52	8.48	-10.21	97
England	Eden	7.80	0.02	53	7.43	-2.20	97
England	Woking	7.80	0.07	54	4.98	-6.82	89
England	Amber Valley	7.79	0.12	55	9.84	-3.64	169
England	Chorley	7.79	0.16	56	11.34	-1.00	136
England	Huntingdonshire	7.78	0.37	57	10.16	-4.53	204
England	North Lincolnshire	7.77	0.31	58	9.63	-5.80	487
England	Wealden	7.77	0.42	59	11.79	-4.70	246
England	Test Valley	7.77	0.08	60	8.41	-3.05	163
England	Stockport	7.76	0.16	61	7.78	-3.24	524
England	Cheshire East	7.76	0.20	62	10.24	-0.25	441
England	Rutland	7.76	0.03	63	8.18	-2.50	182
England	South Derbyshire	7.76	0.14	64	5.98	-5.00	138
England	Rushmoor	7.76	0.09	65	8.87	-2.93	91
England	Corby	7.76	0.54	66	7.60	-11.42	38
Scotland	Highland	7.75	-0.10	67	10.48	-0.73	327
England	Mid Devon	7.75	0.45	68	16.38	0.01	122
Scotland	Dumfries & Galloway	7.73	-0.03	69	12.27	0.79	521
England	Broxtowe	7.73	-0.10	70	7.33	-1.28	161
England	Epping Forest	7.73	0.12	71	9.25	-4.95	123
England	Ribble Valley	7.73	0.10	72	13.81	-3.94	74
England	Central Bedfordshire	7.72	0.08	73	10.32	-0.85	378
England	New Forest	7.72	-0.16	74	10.42	2.58	278
England	Wyre	7.72	0.25	75	10.00	-3.12	148
England	Eastleigh	7.72	0.16	76	6.26	-6.83	142
England	Vale of White Horse	7.72	0.14	77	5.98	-2.37	133
England	Sevenoaks	7.72	0.09	78	6.44	-8.63	103
England	Ryedale	7.72	0.07	79	16.63	2.96	78
Wales	Denbighshire	7.71	0.16	80	10.20	-4.47	575
England	South Kesteven	7.71	-0.03	81	9.55	0.79	157
England	Havant	7.71	0.11	82	8.06	-6.41	126
England	West Oxfordshire	7.71	0.14	83	5.66	-6.67	120
England	South Hams	7.71	0.33	84	8.96	-9.16	113
England	East Staffordshire	7.71	0.41	85	11.94	-5.13	107

Country	LAD Name	Life Satisfaction	Change	Rank	Living Below HPL (%)	Change (%)	Sample Size
England	Ipswich	7.71	-0.03	86	11.64	3.74	105
England	East Cambridgeshire	7.71	-0.13	87	12.29	-0.01	96
England	Newham	7.70	0.48	88	11.04	-9.49	159
England	Boston	7.70	0.53	89	9.88	-13.64	55
England	East Riding of Yorkshire	7.69	0.05	90	11.83	-1.82	735
England	Newcastle upon Tyne	7.69	0.29	91	10.54	-4.13	495
England	Harrow	7.69	0.32	92	8.80	-6.84	275
England	Ealing	7.69	0.47	93	7.57	-9.17	199
England	Chelmsford	7.69	0.02	94	11.06	-3.46	163
England	Nuneaton and Bedworth	7.69	-0.01	95	9.70	0.70	149
England	Hastings	7.69	0.50	96	12.77	-6.46	124
England	Gosport	7.69	-0.07	97	8.10	-0.04	82
England	Rossendale	7.69	0.17	98	7.82	-5.39	72
England	Wigan	7.68	0.29	99	12.37	-3.50	456
England	Wychavon	7.68	0.06	100	9.81	-0.44	182
England	Ashford	7.68	0.12	101	10.53	-2.87	141
England	Hart	7.68	-0.44	102	9.46	1.45	139
England	Oxford	7.68	0.14	103	6.61	-3.74	105
England	Luton	7.67	0.35	104	10.93	-4.42	366
England	East Lindsey	7.67	0.25	105	11.06	-5.61	142
England	Copeland	7.67	-0.06	106	14.89	2.99	124
England	Sheffield	7.66	0.27	107	9.96	-6.03	644
England	Broadland	7.66	0.01	108	9.69	-1.85	159
England	Basildon	7.66	0.34	109	11.11	-6.93	149
England	Windsor and Maidenhead	7.65	0.05	110	5.84	-4.83	631
England	York	7.65	-0.02	111	9.08	-1.93	554
England	Erewash	7.65	0.26	112	6.07	-13.04	129
England	South Staffordshire	7.65	-0.01	113	8.82	-3.77	108
England	Oadby and Wigston	7.65	-0.18	114	8.85	-4.75	50
Wales	Carmarthenshire	7.64	0.20	115	9.72	-4.93	733
Wales	Monmouthshire	7.64	0.10	116	9.25	-3.36	610
Wales	Neath Port Talbot	7.64	0.14	117	13.33	-2.91	558
England	Lewes	7.64	-0.05	118	10.36	-2.27	143
Wales	Pembrokeshire	7.63	0.07	119	12.37	0.78	730
Scotland	Argyll & Bute	7.63	-0.03	120	14.07	1.50	467
England	South Cambridgeshire	7.63	0.12	121	12.12	1.16	202
England	Scarborough	7.63	0.11	122	15.52	6.24	155
England	Tendring	7.63	0.28	123	12.99	2.25	137
England	Wakefield	7.62	0.23	124	12.87	-2.20	578
Scotland	East Dunbartonshire	7.62	0.08	125	11.55	-0.68	567
England	Tameside	7.62	0.35	126	12.66	-5.65	560
England	Tower Hamlets	7.62	0.29	127	8.52	-6.35	203
England	Sedgemoor	7.62	-0.02	128	11.52	-0.37	183
England	Mendip	7.62	0.25	129	11.92	-7.05	152
England	Breckland	7.62	-0.03	130	7.09	-7.32	149

Country	LAD Name	Life Satisfaction	Change	Rank	Living Below HPL (%)	Change (%)	Sample Size
England	North Norfolk	7.62	-0.12	131	7.37	-3.74	119
England	Worcester	7.62	0.58	132	9.87	-10.54	108
England	Watford	7.62	0.17	133	5.98	-7.57	98
England	Fenland	7.62	0.36	134	13.62	-4.40	93
England	Derbyshire Dales	7.62	0.39	135	15.64	2.50	81
Wales	Gwynedd	7.61	0.02	136	12.23	-0.54	586
England	Thurrock	7.61	0.29	137	12.98	-4.62	463
England	South Somerset	7.61	0.30	138	16.91	0.01	199
England	Basingstoke and Deane	7.61	0.06	139	9.41	-3.62	196
England	Swindon	7.60	0.12	140	9.85	-4.93	554
England	Stroud	7.60	-0.03	141	12.54	2.55	201
England	Barking and Dagenham	7.60	0.51	142	13.89	-5.53	164
England	Waverley	7.60	-0.20	143	7.40	-0.82	104
England	North Somerset	7.59	0.21	144	11.04	-3.49	643
England	Kirklees	7.59	0.23	145	10.97	-4.60	524
Wales	Powys	7.59	0.06	146	13.40	-0.43	503
Scotland	Aberdeenshire	7.59	-0.14	147	8.84	-2.46	459
England	Newcastle-under-Lyme	7.59	-0.01	148	16.44	6.89	126
England	Cornwall	7.58	-0.07	149	12.94	-0.35	717
Wales	Isle of Anglesey	7.58	-0.20	150	12.61	1.26	600
England	Merton	7.58	0.40	151	8.89	-8.18	250
England	Cheltenham	7.58	-0.06	152	8.53	-3.77	162
England	Elmbridge	7.58	0.00	153	10.10	0.06	146
England	Brentwood	7.58	0.45	154	7.75	-7.63	68
England	Brighton and Hove	7.57	0.15	155	10.60	-2.51	557
Scotland	Angus	7.57	0.06	156	13.69	-0.51	491
England	Leicester	7.57	0.17	157	13.06	-2.21	389
England	Havering	7.57	0.21	158	11.53	-5.15	330
Scotland	East Lothian	7.57	-0.04	159	9.44	-0.83	327
England	Redbridge	7.57	0.27	160	11.67	-7.57	231
Scotland	Clackmannanshire	7.57	-0.13	161	12.29	-2.14	211
England	Harborough	7.57	-0.17	162	11.48	2.21	130
England	West Lancashire	7.57	0.18	163	15.29	-3.42	102
England	Selby	7.57	-0.19	164	15.54	8.52	94
England	Shropshire	7.56	-0.03	165	11.02	-1.61	551
England	Reigate and Banstead	7.56	-0.28	166	8.29	3.18	157
England	Rugby	7.56	-0.07	167	8.44	0.30	152
England	Tunbridge Wells	7.56	0.12	168	10.61	-3.32	107
England	Southend-on-Sea	7.55	0.22	169	13.22	-3.42	619
England	Herefordshire, County of	7.55	0.03	170	12.74	-2.73	610
Scotland	Scottish Borders	7.55	-0.21	171	11.93	0.43	389
England	Wandsworth	7.55	0.30	172	9.80	-3.61	258
England	North Kesteven	7.55	-0.10	173	13.52	4.54	152
England	Gedling	7.55	0.05	174	8.56	-6.03	139
England	North Warwickshire	7.55	0.63	175	16.64	-3.25	78

Country	LAD Name	Life Satisfaction	Change	Rank	Living Below HPL (%)	Change (%)	Sample Size
England	Crawley	7.55	0.13	176	8.96	-8.10	75
England	County Durham	7.54	0.23	177	13.91	-4.55	734
England	Leeds	7.54	0.07	178	11.77	-2.27	720
England	Bath and North East Somerset	7.54	-0.15	179	13.97	3.06	589
Wales	Ceredigion	7.54	-0.08	180	10.55	-1.04	518
Scotland	South Ayrshire	7.54	0.14	181	13.65	-1.91	458
Wales	The Vale of Glamorgan	7.53	0.00	182	12.15	-0.61	520
England	Hillingdon	7.53	0.16	183	11.76	-3.29	212
England	Shepway	7.53	0.09	184	15.40	0.26	121
England	North East Derbyshire	7.53	-0.14	185	11.72	-0.53	103
England	South Gloucestershire	7.52	-0.01	186	11.58	-1.48	689
England	Sefton	7.52	0.13	187	15.26	0.86	553
England	South Tyneside	7.52	0.30	188	14.30	-4.72	534
England	Stoke-on-Trent	7.52	0.31	189	15.43	-2.69	527
Wales	Flintshire	7.52	-0.01	190	14.44	0.19	489
England	Dudley	7.52	-0.06	191	11.74	0.51	383
Scotland	Falkirk	7.52	0.02	192	15.54	4.65	348
Wales	Merthyr Tydfil	7.52	0.21	193	16.51	-2.12	306
England	Dover	7.52	0.09	194	13.61	2.21	150
Wales	Conwy	7.51	-0.05	195	14.29	0.52	638
England	North Tyneside	7.51	0.06	196	13.40	-0.91	572
England	Oldham	7.51	0.20	197	14.59	-5.20	453
Wales	Wrexham	7.51	0.05	198	13.24	-1.28	442
Scotland	Moray	7.51	-0.07	199	11.39	-0.72	392
England	Wyre Forest	7.51	-0.07	200	9.58	-3.62	106
England	Birmingham	7.50	0.29	201	11.80	-7.05	839
England	Redcar and Cleveland	7.50	-0.03	202	14.74	-0.57	641
England	Middlesbrough	7.50	0.11	203	14.40	-4.03	572
England	West Berkshire	7.50	-0.08	204	11.82	0.47	449
England	Wolverhampton	7.50	0.50	205	14.84	-4.36	397
Wales	Blaenau Gwent	7.50	0.23	206	16.60	-3.89	354
England	Lewisham	7.50	0.27	207	9.91	-7.83	263
England	King's Lynn and West Norfolk	7.50	-0.20	208	13.74	3.25	161
England	Norwich	7.50	0.05	209	13.62	-2.28	123
England	Telford and Wrekin	7.49	0.05	210	14.11	-2.67	398
England	Swale	7.49	-0.18	211	13.26	0.85	110
England	Trafford	7.48	-0.03	212	11.15	-1.66	490
England	St. Helens	7.48	0.10	213	13.26	-3.45	411
England	East Devon	7.48	-0.21	214	13.09	3.89	222
England	South Holland	7.48	-0.08	215	17.89	4.57	105
England	Harlow	7.48	0.69	216	18.17	-7.30	68
England	Bolsover	7.48	-0.04	217	8.63	-7.85	54
Wales	Swansea	7.47	0.14	218	14.15	-1.89	751
England	Bracknell Forest	7.47	0.01	219	11.69	-1.04	623
England	Wokingham	7.47	-0.30	220	9.85	1.23	575

Country	LAD Name	Life Satisfaction	Change	Rank	Living Below HPL (%)	Change (%)	Sample Size
England	Bradford	7.47	0.08	221	10.79	-5.97	505
England	Cheshire West and Chester	7.47	0.03	222	12.26	0.42	372
England	Croydon	7.47	0.46	223	10.67	-13.22	335
England	Richmond upon Thames	7.47	0.07	224	9.82	-2.91	330
England	Waltham Forest	7.47	0.23	225	11.05	-9.47	206
England	Allerdale	7.47	-0.21	226	11.88	1.48	162
England	Rotherham	7.46	0.01	227	9.63	-6.29	487
Scotland	Stirling	7.46	-0.24	228	12.43	2.04	353
England	Kingston upon Thames	7.46	0.29	229	10.36	-5.93	277
England	Tewkesbury	7.46	-0.08	230	14.63	1.80	143
England	Eastbourne	7.46	0.12	231	18.47	1.29	141
England	Cambridge	7.46	0.00	232	8.82	-1.67	100
England	Broxbourne	7.46	-0.27	233	22.07	9.35	80
England	Calderdale	7.45	0.00	234	10.02	-5.08	477
England	Manchester	7.45	0.29	235	11.87	-6.78	405
England	Warwick	7.45	-0.14	236	8.06	-2.36	231
England	Carlisle	7.45	-0.15	237	16.88	6.85	134
England	Wiltshire	7.44	-0.22	238	10.94	-0.15	774
England	Solihull	7.44	-0.14	239	11.43	-0.64	642
England	Coventry	7.44	0.08	240	12.53	-0.84	613
Wales	Caerphilly	7.44	0.05	241	14.45	-1.73	594
England	Blackpool	7.44	0.10	242	17.24	-0.45	577
England	Southampton	7.44	0.06	243	11.66	-0.04	525
England	Bury	7.44	-0.03	244	14.27	-0.26	498
Wales	Torfaen	7.44	0.11	245	15.73	-3.14	465
Scotland	Aberdeen City	7.44	-0.08	246	11.05	-2.56	420
England	Sutton	7.44	0.15	247	12.74	-2.30	330
Scotland	Midlothian	7.44	-0.04	248	12.58	0.47	300
England	Bromley	7.44	-0.16	249	11.67	-0.71	295
England	Milton Keynes	7.43	0.03	250	12.97	-2.31	573
England	Doncaster	7.43	-0.02	251	16.42	-1.96	478
England	Bolton	7.43	0.05	252	17.37	-0.76	464
England	Warrington	7.43	-0.08	253	12.45	-1.02	440
Scotland	East Ayrshire	7.43	0.10	254	15.44	-2.06	398
England	Bexley	7.43	0.02	255	14.22	-1.55	317
England	Dacorum	7.43	-0.07	256	15.00	2.92	145
England	Tonbridge and Malling	7.43	0.09	257	9.11	-3.57	121
England	Craven	7.43	-0.13	258	9.60	-8.34	83
England	Tamworth	7.43	-0.13	259	14.52	1.37	73
England	Maldon	7.43	-0.17	260	16.28	5.21	71
England	Hartlepool	7.42	0.10	261	15.59	-1.29	659
England	Rochdale	7.42	0.24	262	15.98	-5.99	501
Wales	Rhondda Cynon Taf	7.42	0.07	263	16.15	-0.55	499
Scotland	Edinburgh, City of	7.42	-0.10	264	9.40	-1.94	481
England	Blackburn with Darwen	7.42	0.15	265	16.67	-4.08	403

Country	LAD Name	Life Satisfaction	Change	Rank	Living Below HPL (%)	Change (%)	Sample Size
England	Walsall	7.42	-0.16	266	18.52	3.62	372
England	Rushcliffe	7.42	-0.32	267	5.01	-4.69	151
England	Enfield	7.41	0.17	268	13.05	-1.22	258
England	Lambeth	7.41	0.33	269	7.68	-12.75	194
England	Brent	7.41	0.13	270	13.95	-1.88	142
England	Mid Sussex	7.41	-0.32	271	13.07	3.53	136
England	Maidstone	7.41	-0.12	272	13.78	-0.46	117
England	Plymouth	7.40	-0.09	273	13.67	-0.89	548
England	Hounslow	7.40	0.05	274	15.29	0.21	221
England	East Hampshire	7.40	-0.38	275	8.89	0.78	117
England	Chichester	7.40	-0.23	276	12.36	-0.93	110
England	Torbay	7.39	0.04	277	15.89	-0.50	797
England	Gloucester	7.39	-0.15	278	14.91	-1.40	153
England	Guildford	7.39	0.04	279	11.11	-0.29	122
England	North East Lincolnshire	7.38	0.02	280	15.68	-2.99	573
England	Medway	7.38	0.09	281	13.37	-3.78	383
England	Westminster	7.38	0.38	282	14.78	-3.51	157
England	Bristol, City of	7.37	0.03	283	12.71	-1.79	718
England	Darlington	7.37	-0.09	284	15.23	0.28	643
Scotland	Inverclyde	7.37	0.03	285	15.45	-3.06	381
England	Runnymede	7.37	0.03	286	14.09	0.07	55
England	Portsmouth	7.36	-0.02	287	15.22	1.15	538
England	Salford	7.36	0.06	288	14.56	-1.85	367
England	Knowsley	7.36	0.19	289	16.99	-4.95	360
England	Barnet	7.36	0.07	290	13.28	1.22	351
England	South Norfolk	7.36	-0.36	291	14.87	3.29	155
England	South Ribble	7.36	-0.27	292	15.36	1.55	126
England	Derby	7.35	-0.07	293	14.97	-1.19	546
England	Camden	7.35	0.11	294	14.79	1.37	170
England	Colchester	7.35	0.31	295	18.63	0.78	150
England	Cannock Chase	7.35	-0.14	296	17.64	4.02	104
England	Lincoln	7.35	0.00	297	14.25	-1.70	101
England	Adur	7.35	-0.12	298	13.79	-5.39	67
England	Liverpool	7.34	0.03	299	13.95	-4.14	436
England	Halton	7.34	-0.05	300	16.34	-1.02	432
Scotland	South Lanarkshire	7.34	-0.24	301	14.35	1.76	403
Scotland	Renfrewshire	7.33	-0.07	302	13.10	-3.32	373
England	Thanet	7.33	-0.12	303	18.11	1.05	150
England	Chesterfield	7.33	-0.04	304	19.31	3.57	136
England	Preston	7.33	-0.24	305	15.98	1.37	124
England	Haringey	7.32	0.16	306	13.04	-6.61	256
England	Southwark	7.32	0.12	307	12.12	-5.81	240
England	Hackney	7.32	0.25	308	10.98	-6.77	147
England	Barnsley	7.31	0.05	309	16.83	-3.30	564
Scotland	West Lothian	7.31	-0.35	310	17.73	6.84	327

Country	LAD Name	Life Satisfaction	Change	Rank	Living Below HPL (%)	Change (%)	Sample Size
England	Exeter	7.31	-0.48	311	12.33	4.32	154
England	Stockton-on-Tees	7.30	-0.23	312	15.27	2.71	645
Wales	Bridgend	7.30	-0.11	313	14.56	-1.44	509
England	Reading	7.30	-0.08	314	12.28	-0.14	357
England	Islington	7.30	0.16	315	15.38	-0.38	212
England	Hammersmith and Fulham	7.30	0.09	316	12.62	-6.60	198
England	Sandwell	7.29	-0.10	317	15.25	-2.69	301
England	Hyndburn	7.29	0.18	318	20.58	1.05	68
England	Barrow-in-Furness	7.28	-0.10	319	15.48	1.24	111
England	Malvern Hills	7.28	-0.32	320	16.76	1.23	110
England	Wellingborough	7.28	0.31	321	15.78	-2.79	62
England	Isle of Wight	7.27	-0.11	322	20.15	4.55	686
Wales	Newport	7.27	0.03	323	15.81	-2.61	605
England	Peterborough	7.27	-0.15	324	15.46	-1.18	462
Scotland	Dundee City	7.27	-0.09	325	14.38	-3.45	414
England	Spelthorne	7.27	-0.13	326	14.73	-0.36	117
England	Nottingham	7.25	-0.17	327	15.80	2.45	540
England	Wirral	7.25	-0.14	328	17.46	1.24	502
England	Kingston upon Hull, City of	7.25	-0.09	329	17.36	-0.30	441
England	Slough	7.25	-0.08	330	11.72	-4.79	282
Wales	Cardiff	7.24	-0.16	331	16.80	2.64	492
England	Greenwich	7.24	0.09	332	15.19	-4.00	233
England	East Northamptonshire	7.24	-0.35	333	14.53	-0.19	93
England	Sunderland	7.23	-0.09	334	14.07	-3.56	621
England	Ashfield	7.23	0.14	335	13.81	-7.89	138
England	Forest of Dean	7.21	-0.24	336	18.27	4.15	149
England	Bassetlaw	7.21	-0.47	337	18.49	4.00	123
Scotland	West Dunbartonshire	7.20	-0.09	338	15.88	-0.30	449
England	Kensington and Chelsea	7.18	-0.52	339	15.15	3.98	198
England	Mansfield	7.18	-0.21	340	16.47	-0.32	86
England	Burnley	7.17	-0.33	341	9.43	-6.69	71
England	Gravesham	7.16	-0.37	342	17.31	2.30	43
Scotland	North Ayrshire	7.15	-0.12	343	18.36	-1.35	428
England	Newark and Sherwood	7.14	-0.52	344	20.08	7.37	120
England	Epsom and Ewell	7.14	-0.70	345	21.34	13.01	66
England	Stafford	7.10	-0.58	346	19.56	10.34	184
England	Redditch	7.09	-0.28	347	22.68	6.82	102
England	Hertsmere	7.08	-0.73	348	18.33	7.97	105
England	Melton	7.03	-0.56	349	31.60	20.09	62
England	South Northamptonshire	6.93	-1.03	350	16.44	12.95	69

Source Annual Population Survey (April 2012- March 2022) DOI <https://doi.org/10.57906/0qp1-6k77>

Notes: Sample restricted to respondents aged 16 years old and older. All numbers in this table are aggregated at the level of the Local Authority District in the year ending March 2022. The changes are calculated on the interval between April 2012 and March 2022. The sample sizes that the numbers are based on are presented in the last column. There are no instances in which shares and averages in this table are calculated on less than 10 observations. As a consequence, the City of London has been dropped from the analysis. These numbers pertain to areas in England, Wales, and Scotland. The Rank refers to the ranking of areas according to Life Satisfaction, where the highest ranked area has the highest Life Satisfaction.

Table A.2: Life Satisfaction and the Share Living Below the Happiness Poverty Line Across Major Cities

City Name	Life Satisfaction	Change	Rank	Living Below HPL (%)	Change (%)	Sample Size
Worthing	8.09	0.785	1	7.53	-8.22	112
Woking	8.00	0.151	2	5.62	-4.32	90
Harrogate	7.96	0.241	3	8.61	-4.62	87
St Albans	7.94	0.754	4	4.74	-10.85	78
High Wycombe	7.92	0.520	5	5.79	-7.55	141
Bedford	7.84	0.611	6	10.96	-2.59	107
Wigan	7.80	0.372	7	13.11	-3.52	111
Stockport	7.73	0.424	8	8.71	-5.91	172
Sutton Coldfield	7.73	0.162	9	9.27	-4.42	160
Watford	7.71	0.290	10	5.12	-9.43	137
Chelmsford	7.71	0.085	11	9.45	-5.59	104
Northampton	7.70	0.383	12	7.01	-6.71	220
Worcester	7.68	0.506	13	9.01	-10.35	109
Nuneaton	7.67	-0.105	14	10.02	2.48	106
Ipswich	7.66	-0.045	15	12.66	4.72	117
Sheffield	7.64	0.241	16	10.46	-5.67	597
Newcastle upon Tyne	7.64	0.323	17	11.75	-4.02	460
Wakefield	7.64	0.412	18	13.68	-2.58	161
Luton	7.62	0.308	19	11.57	-3.56	373
Dudley	7.62	0.292	20	12.53	-0.61	61
Poole	7.61	0.094	21	11.32	-3.36	455
York	7.61	0.036	22	10.02	-3.16	409
Southport	7.60	0.275	23	11.20	-2.65	197
Oxford	7.60	0.041	24	8.48	-0.92	113
Telford	7.59	0.170	25	12.73	-4.46	328
Chester	7.59	0.146	26	14.33	4.63	94
Hastings	7.58	0.424	27	14.67	-5.88	124
Stoke-on-Trent	7.55	0.301	28	14.11	-3.79	553
Harlow	7.55	0.796	29	18.27	-7.12	65
Southend-on-Sea	7.54	0.237	30	13.83	-2.79	619
Solihull	7.54	-0.054	31	10.28	-2.64	324
Basildon	7.54	0.570	32	14.63	-11.90	87
Swindon	7.53	0.055	33	10.94	-4.78	433
Scunthorpe	7.53	0.282	34	15.14	-3.99	201
Cambridge	7.53	0.049	35	10.58	0.33	129
Mansfield	7.53	0.134	36	13.17	-2.79	67
Shrewsbury	7.52	0.143	37	10.76	-4.92	139
Leeds	7.51	0.240	38	13.03	-4.28	397
Wolverhampton	7.51	0.482	39	14.85	-3.11	383
Norwich	7.51	0.141	40	13.40	-3.97	181
Gloucester	7.51	0.052	41	13.91	-3.44	179
Basingstoke	7.51	0.261	42	11.23	-9.91	124
Leicester	7.50	0.129	43	14.17	-1.51	451

City Name	Life Satisfaction	Change	Rank	Living Below HPL (%)	Change (%)	Sample Size
Weston-Super-Mare	7.50	0.318	44	12.93	-6.24	233
Doncaster	7.50	0.169	45	11.44	-10.03	176
West Bromwich	7.50	0.215	46	15.19	-7.49	69
Bracknell	7.49	0.146	47	12.12	-2.18	412
Bath	7.49	-0.133	48	14.78	2.64	290
Cheltenham	7.49	-0.124	49	9.74	-5.13	162
Hemel Hempstead	7.48	0.078	50	16.88	2.48	81
Bradford	7.47	0.245	51	11.33	-8.21	247
London	7.46	0.213	52	12.08	-4.87	7595
Middlesbrough	7.46	0.107	53	15.12	-4.12	711
Huddersfield	7.46	0.208	54	13.01	-4.96	212
Hartlepool	7.45	0.158	55	16.20	-0.95	618
Manchester	7.45	0.281	56	11.35	-8.41	519
Southampton	7.44	0.078	57	12.86	-0.22	552
Salford	7.44	0.223	58	12.12	-6.50	134
Reading	7.43	-0.024	59	10.85	-1.51	616
Portsmouth	7.43	0.048	60	14.07	-0.54	569
Eastbourne	7.43	0.051	61	17.71	-0.87	166
Plymouth	7.42	-0.003	62	13.54	-2.23	552
Milton Keynes	7.42	0.107	63	14.54	-2.06	346
South Shields	7.42	0.307	64	18.28	-2.71	265
Maidstone	7.42	-0.136	65	15.44	0.31	77
Blackpool	7.41	0.117	66	17.65	-0.36	586
Oldham	7.41	0.199	67	16.33	-5.09	180
Halifax	7.41	0.046	68	9.37	-7.86	175
Chatham	7.41	0.275	69	14.71	-7.45	91
Blackburn	7.40	0.205	70	18.94	-3.47	276
Rochdale	7.40	0.300	71	17.22	-6.14	233
Burton upon Trent	7.40	0.341	72	16.32	-5.62	59
Bristol	7.39	0.011	73	12.88	-1.80	1000
Coventry	7.39	0.082	74	13.71	-0.93	628
Brighton and Hove	7.39	0.035	75	12.40	-2.07	474
Crawley	7.39	-0.114	76	11.98	-3.62	75
Darlington	7.38	-0.065	77	16.29	1.13	543
Warrington	7.38	-0.123	78	13.54	0.15	358
Colchester	7.38	0.414	79	15.21	-2.85	95
Birmingham	7.37	0.202	80	13.88	-6.45	899
Derby	7.37	-0.051	81	15.67	-0.88	558
Swansea	7.37	0.140	82	16.65	-1.82	542
Bournemouth	7.37	-0.060	83	14.62	0.16	466
Stockton-on-Tees	7.37	-0.259	84	15.30	2.91	269
Carlisle	7.36	-0.250	85	20.27	9.02	90
Liverpool	7.35	0.099	86	14.07	-5.25	639
Rotherham	7.35	-0.072	87	14.51	-2.20	175
Newport	7.34	0.127	88	16.12	-3.06	526

City Name	Life Satisfaction	Change	Rank	Living Below HPL (%)	Change (%)	Sample Size
Bolton	7.34	0.082	89	18.04	-3.74	262
Stevenage	7.34	-0.045	90	16.46	-1.92	82
Exeter	7.33	-0.481	91	12.15	2.42	142
Kingston upon Hull	7.32	-0.016	92	17.65	-0.48	503
Slough	7.31	-0.007	93	12.55	-3.15	298
Lincoln	7.30	0.028	94	17.38	0.79	108
Bury	7.27	-0.123	95	18.21	1.53	200
Burnley	7.27	-0.286	96	12.44	-3.71	68
Nottingham	7.24	-0.068	97	17.39	2.55	494
Chesterfield	7.24	-0.222	98	18.92	5.53	114
Peterborough	7.23	-0.118	99	16.42	-1.01	383
Gillingham	7.22	-0.068	100	15.09	-1.12	142
Preston	7.22	-0.373	101	19.63	4.11	110
Cardiff	7.21	-0.178	102	17.34	1.76	461
Sunderland	7.21	-0.141	103	13.30	-3.53	342
Gateshead	7.21	0.008	104	18.68	0.20	285
St Helens	7.21	-0.087	105	16.59	-2.45	225
Grimsby	7.18	0.014	106	19.58	-0.95	298
Newcastle-under-Lyme	7.15	-0.637	107	26.79	17.99	81
Guildford	7.13	-0.119	108	15.82	2.33	72
Barnsley	7.09	-0.110	109	19.63	-2.90	214
Redditch	7.05	-0.161	110	25.08	7.49	99
Birkenhead	7.01	-0.178	111	25.39	3.89	127
Walsall	6.98	-0.611	112	27.14	11.61	69

Notes: Sample restricted to respondents aged 16 years old and older. All numbers in this table are aggregated at the level of major cities in the year ending March 2022. The changes are calculated on the interval between April 2012 and March 2022. The sample sizes that the numbers are based on are presented in the last column. There are no instances in which shares and averages in this Table are calculated on less than 10 observations. These numbers pertain to areas in England and Wales. The Rank refers to the ranking of areas according to Life Satisfaction, where the highest ranked area has the highest Life Satisfaction.

Table A.3: Life Satisfaction and the Share Living Below the Happiness Poverty Line Across Local Authority Districts (April 2012- March 2019)

Country	LAD Name	Life Satisfaction	Change	Rank	Living Below HPL (%)	Change (%)	Sample Size
England	Fylde	8.45	1.047	1	3.43	-8.24	93
Scotland	Orkney Islands	8.40	0.452	2	5.36	-1.57	130
Scotland	Eilean Siar	8.26	0.217	3	6.86	-3.41	458
England	Fareham	8.26	0.669	4	3.63	-7.79	130
England	Hambleton	8.25	0.568	5	4.72	-11.18	123
England	West Devon	8.25	0.783	6	4.13	-8.03	76
England	North Devon	8.22	0.371	7	5.48	-3.07	120
England	Ribble Valley	8.19	0.561	8	5.99	-11.76	67
England	Brentwood	8.17	1.041	9	7.53	-7.85	62
England	Forest of Dean	8.16	0.702	10	5.91	-8.21	116
England	Havant	8.14	0.528	11	12.09	-2.37	131
England	Cotswold	8.12	0.350	12	4.04	-7.92	109
England	Horsham	8.10	0.287	13	4.76	-6.42	163
England	Elmbridge	8.10	0.519	14	6.38	-3.66	131
England	Chichester	8.10	0.464	15	8.10	-5.20	127
England	Tonbridge and Malling	8.10	0.755	16	2.35	-10.33	115
England	Waverley	8.09	0.288	17	5.64	-2.58	120
England	Bolsover	8.09	0.575	18	12.91	-3.57	107
England	Great Yarmouth	8.09	0.787	19	7.70	-8.03	92
England	Rushmoor	8.09	0.419	20	9.03	-2.77	89
England	Winchester	8.08	0.443	21	6.84	-4.62	148
England	Shepway	8.08	0.645	22	9.15	-6.00	143
England	West Lindsey	8.08	0.448	23	9.44	-3.14	140
England	Hart	8.08	-0.037	24	8.47	0.45	111
England	East Devon	8.06	0.379	25	6.64	-2.56	218
England	Mole Valley	8.06	0.445	26	5.62	-4.19	91
England	Lichfield	8.05	0.351	27	6.62	-4.12	122
England	Craven	8.05	0.479	28	8.59	-9.35	68
England	Wokingham	8.04	0.272	29	5.09	-3.53	708
England	Dartford	8.04	0.287	30	5.22	-4.96	90
England	Newark and Sherwood	8.03	0.366	31	5.02	-7.69	146
England	Woking	8.03	0.303	32	5.25	-6.56	91
England	Taunton Deane	8.02	0.207	33	5.52	-1.86	186
England	Suffolk Coastal	8.02	0.394	34	4.66	-6.88	183
England	Wychavon	8.02	0.401	35	5.46	-4.78	146
England	East Hampshire	8.02	0.235	36	6.20	-1.92	134
England	Chorley	8.02	0.391	37	4.88	-7.46	125
Scotland	Highland	8.01	0.160	38	9.05	-2.17	680
Scotland	Midlothian	8.01	0.519	39	7.53	-4.58	569
England	North Norfolk	8.01	0.268	40	13.50	2.39	111
England	Purbeck	8.01	0.471	41	6.97	-8.06	74
England	South Derbyshire	8.00	0.380	42	8.08	-2.90	110

Country	LAD Name	Life Satisfaction	Change	Rank	Living Below HPL (%)	Change (%)	Sample Size
England	Daventry	8.00	0.173	43	7.09	-3.44	87
England	Babergh	7.99	0.556	44	8.30	-10.38	119
England	North West Leicestershire	7.99	0.543	45	7.12	-7.18	112
England	Hyndburn	7.99	0.879	46	7.73	-11.80	84
England	Oadby and Wigston	7.99	0.166	47	8.59	-5.01	49
England	West Dorset	7.98	0.358	48	8.96	-0.01	203
England	Warwick	7.98	0.398	49	3.04	-7.37	183
England	St Edmundsbury	7.98	0.484	50	8.44	-5.45	125
England	South Bucks	7.98	0.291	51	3.32	-3.22	89
England	Boston	7.98	0.811	52	5.69	-17.83	62
Scotland	East Lothian	7.97	0.363	53	6.61	-3.66	608
England	Wycombe	7.97	0.495	54	6.96	-4.40	284
England	New Forest	7.97	0.092	55	5.95	-1.88	216
England	Ashford	7.97	0.405	56	10.10	-3.31	127
England	Eden	7.97	0.194	57	6.27	-3.35	113
Wales	Isle of Anglesey	7.96	0.178	58	10.27	-1.08	887
England	Carlisle	7.96	0.358	59	7.95	-2.08	207
England	Amber Valley	7.96	0.289	60	11.56	-1.91	154
England	South Staffordshire	7.96	0.299	61	10.98	-1.62	106
England	South Oxfordshire	7.95	0.327	62	4.00	-6.65	158
England	Rugby	7.95	0.323	63	5.09	-3.05	127
England	East Riding of Yorkshire	7.94	0.307	64	9.49	-4.17	857
England	Broadland	7.94	0.285	65	5.07	-6.47	150
England	Bromsgrove	7.94	0.393	66	5.58	-7.07	142
England	Newcastle-under-Lyme	7.94	0.332	67	9.16	-0.38	124
Scotland	Shetland Islands	7.94	-0.179	68	12.75	5.63	112
England	Selby	7.94	0.172	69	7.20	0.17	106
England	Broxbourne	7.94	0.212	70	13.46	0.74	77
England	Rochford	7.94	0.063	71	6.65	-3.96	77
Wales	Gwynedd	7.93	0.342	72	9.96	-2.81	733
England	Cheshire East	7.93	0.371	73	7.44	-3.05	431
England	Charnwood	7.93	0.713	74	6.87	-7.90	195
England	Mendip	7.93	0.553	75	6.12	-12.85	161
England	Cherwell	7.93	0.493	76	6.30	-8.79	150
England	Scarborough	7.93	0.409	77	11.72	2.45	136
England	Chesterfield	7.93	0.557	78	10.61	-5.13	126
England	Preston	7.93	0.358	79	5.94	-8.67	121
Wales	Powys	7.92	0.392	80	8.97	-4.86	738
England	Test Valley	7.92	0.239	81	7.56	-3.90	158
England	East Dorset	7.92	0.257	82	11.63	-1.93	155
Scotland	Aberdeenshire	7.91	0.179	83	7.48	-3.82	558
England	King's Lynn and West Norfolk	7.91	0.218	84	10.12	-0.37	185
England	Stroud	7.91	0.288	85	7.29	-2.70	182
England	Basingstoke and Deane	7.91	0.368	86	8.88	-4.15	166

Country	LAD Name	Life Satisfaction	Change	Rank	Living Below HPL (%)	Change (%)	Sample Size
England	North Warwickshire	7.91	0.986	87	6.81	-13.08	88
England	Allerdale	7.90	0.227	88	11.87	1.46	173
England	Worthing	7.90	0.645	89	8.03	-7.60	104
Scotland	Perth & Kinross	7.89	0.248	90	9.65	-0.73	555
England	South Cambridgeshire	7.89	0.385	91	6.37	-4.60	195
England	Copeland	7.89	0.157	92	15.79	3.90	129
England	Runnymede	7.89	0.547	93	9.46	-4.56	84
England	Three Rivers	7.89	0.460	94	4.08	-10.72	70
Wales	Denbighshire	7.88	0.329	95	8.77	-5.90	845
Scotland	Dumfries & Galloway	7.88	0.116	96	11.01	-0.46	763
England	West Berkshire	7.88	0.308	97	7.16	-4.19	621
England	Central Bedfordshire	7.88	0.238	98	8.47	-2.71	448
England	Sutton	7.88	0.601	99	4.96	-10.08	375
England	South Kesteven	7.88	0.136	100	5.91	-2.84	182
England	Tewkesbury	7.88	0.338	101	6.42	-6.41	138
England	Crawley	7.88	0.457	102	5.97	-11.08	86
England	Maldon	7.88	0.274	103	9.65	-1.42	83
England	North Somerset	7.87	0.490	104	7.62	-6.91	847
England	Bedford	7.87	0.532	105	8.70	-3.70	236
England	Arun	7.87	0.220	106	8.66	1.07	197
England	Herefordshire, County of	7.86	0.345	107	10.64	-4.84	941
Scotland	East Dunbartonshire	7.86	0.315	108	7.25	-4.99	807
England	Epping Forest	7.86	0.242	109	7.00	-7.20	103
England	West Somerset	7.86	0.287	110	3.03	-15.08	51
Wales	Monmouthshire	7.85	0.310	111	10.41	-2.20	849
Wales	Conwy	7.85	0.293	112	10.50	-3.27	825
England	Hounslow	7.85	0.495	113	12.23	-2.85	240
England	Harrogate	7.85	0.110	114	7.54	-4.56	204
England	Bassetlaw	7.85	0.168	115	12.73	-1.76	135
England	West Oxfordshire	7.85	0.272	116	4.66	-7.66	125
England	Reigate and Banstead	7.85	0.005	117	8.77	3.67	116
England	Malvern Hills	7.85	0.260	118	14.55	-0.98	110
England	Forest Heath	7.85	-0.016	119	12.20	-4.39	59
England	Isle of Wight	7.84	0.458	120	10.92	-4.67	1091
England	Merton	7.84	0.657	121	7.66	-9.41	335
England	Huntingdonshire	7.84	0.429	122	6.91	-7.78	182
England	Waveney	7.84	0.297	123	16.01	4.69	147
England	Ashfield	7.84	0.747	124	12.88	-8.82	145
England	Staffordshire Moorlands	7.84	0.275	125	10.91	2.85	115
England	Windsor and Maidenhead	7.83	0.229	126	8.45	-2.22	898
Scotland	Argyll & Bute	7.83	0.177	127	10.14	-2.43	854
England	County Durham	7.83	0.532	128	11.70	-6.76	827
Scotland	East Renfrewshire	7.83	0.338	129	8.59	-3.13	531
England	South Somerset	7.83	0.516	130	5.99	-10.91	211
England	Chelmsford	7.83	0.160	131	9.15	-5.37	178

Country	LAD Name	Life Satisfaction	Change	Rank	Living Below HPL (%)	Change (%)	Sample Size
England	Cambridge	7.83	0.373	132	3.52	-6.97	150
England	Mid Sussex	7.83	0.095	133	5.85	-3.68	146
England	Wyre Forest	7.83	0.260	134	10.29	-2.92	142
England	Mid Suffolk	7.83	0.352	135	7.37	-1.58	110
England	Cannock Chase	7.83	0.351	136	14.62	1.01	104
Wales	Bridgend	7.82	0.403	137	11.69	-4.31	748
England	Tower Hamlets	7.82	0.497	138	8.59	-6.28	255
England	Aylesbury Vale	7.82	0.214	139	6.54	-3.18	252
England	Gloucester	7.82	0.276	140	7.60	-8.71	160
England	Derbyshire Dales	7.82	0.590	141	10.94	-2.20	103
Scotland	East Ayrshire	7.81	0.487	142	9.26	-8.23	628
England	Weymouth and Portland	7.81	0.014	143	7.57	-3.91	120
England	Nuneaton and Bedworth	7.81	0.114	144	8.23	-0.76	116
England	Kettering	7.81	0.442	145	4.92	-6.36	90
England	Solihull	7.80	0.218	146	9.98	-2.09	878
England	Wiltshire	7.80	0.145	147	10.14	-0.94	842
England	Blackburn with Darwen	7.80	0.522	148	11.13	-9.62	842
Scotland	Scottish Borders	7.80	0.031	149	8.72	-2.78	643
England	Broxtowe	7.80	-0.025	150	10.17	1.56	161
England	Chiltern	7.80	0.291	151	7.65	-8.69	151
England	Hinckley and Bosworth	7.80	0.086	152	9.50	0.05	116
England	Blaby	7.80	0.122	153	7.35	-3.87	97
England	Torridge	7.80	0.276	154	12.26	-1.86	86
England	Sevenoaks	7.80	0.166	155	15.26	0.19	80
England	Bath and North East Somerset	7.79	0.107	156	8.72	-2.19	913
Wales	Wrexham	7.79	0.338	157	10.64	-3.89	734
Wales	The Vale of Glamorgan	7.79	0.258	158	8.71	-4.04	658
England	Tamworth	7.79	0.232	159	13.47	0.32	74
England	Bracknell Forest	7.78	0.320	160	8.44	-4.29	783
Scotland	Moray	7.78	0.201	161	10.61	-1.50	624
England	Kingston upon Thames	7.78	0.612	162	7.24	-9.05	345
England	Wyre	7.78	0.304	163	8.85	-4.27	150
England	Gosport	7.78	0.019	164	12.25	4.11	89
England	Shropshire	7.77	0.180	165	11.07	-1.56	852
England	Trafford	7.77	0.255	166	10.03	-2.78	752
England	Leicester	7.77	0.374	167	12.05	-3.23	565
England	Wealden	7.77	0.416	168	10.77	-5.72	206
England	East Lindsey	7.77	0.352	169	12.61	-4.06	159
England	North East Derbyshire	7.77	0.097	170	10.36	-1.90	134
England	Tunbridge Wells	7.77	0.332	171	7.40	-6.53	109
England	Harlow	7.77	0.973	172	9.51	-15.96	90
England	East Cambridgeshire	7.77	-0.069	173	8.02	-4.28	89
England	Leeds	7.76	0.290	174	9.15	-4.89	950
England	Warrington	7.76	0.244	175	7.84	-5.62	681

Country	LAD Name	Life Satisfaction	Change	Rank	Living Below HPL (%)	Change (%)	Sample Size
England	Hillingdon	7.76	0.386	176	9.89	-5.16	363
England	Wigan	7.75	0.367	177	11.01	-4.86	718
Wales	Blaenau Gwent	7.75	0.477	178	13.44	-7.05	594
England	Rutland	7.75	0.018	179	11.66	0.99	258
England	Sedgemoor	7.75	0.109	180	10.76	-1.13	200
England	Dover	7.75	0.324	181	9.77	-1.63	147
England	South Holland	7.75	0.192	182	6.79	-6.54	104
Scotland	Angus	7.74	0.221	183	10.69	-3.51	902
England	Cornwall	7.74	0.088	184	11.21	-2.08	882
England	South Gloucestershire	7.74	0.213	185	8.41	-4.65	821
Wales	Flintshire	7.74	0.209	186	11.34	-2.91	697
England	Uttlesford	7.74	-0.151	187	8.04	2.92	91
England	Christchurch	7.74	0.459	188	9.84	-2.93	84
England	Darlington	7.73	0.262	189	10.83	-4.12	946
England	Tameside	7.73	0.462	190	12.46	-5.84	863
England	North East Lincolnshire	7.73	0.367	191	14.20	-4.48	847
England	Barnsley	7.73	0.462	192	14.35	-5.78	726
England	Sheffield	7.73	0.335	193	10.15	-5.84	705
England	Stafford	7.73	0.047	194	8.02	-1.20	163
England	Eastleigh	7.73	0.178	195	11.14	-1.95	140
England	Gedling	7.73	0.224	196	11.03	-3.56	125
England	Mid Devon	7.73	0.426	197	10.14	-6.23	98
England	Ryedale	7.73	0.086	198	9.67	-4.00	66
England	Stockport	7.72	0.128	199	10.00	-1.01	689
England	North Tyneside	7.72	0.273	200	11.34	-2.97	659
Wales	Merthyr Tydfil	7.72	0.404	201	14.91	-3.72	480
England	Cheshire West and Chester	7.72	0.278	202	11.23	-0.60	379
England	Hammersmith and Fulham	7.72	0.514	203	7.29	-11.93	345
England	South Lakeland	7.72	-0.033	204	10.13	-0.84	196
England	South Norfolk	7.72	0.002	205	13.84	2.26	171
England	Erewash	7.72	0.322	206	12.27	-6.84	157
England	Rother	7.72	0.149	207	12.55	1.07	130
England	High Peak	7.72	0.395	208	11.86	-7.63	96
England	Redcar and Cleveland	7.71	0.177	209	14.53	-0.79	881
England	Telford and Wrekin	7.71	0.269	210	11.40	-5.38	801
England	Bolton	7.71	0.324	211	13.50	-4.63	782
Scotland	Edinburgh, City of	7.71	0.197	212	7.75	-3.59	615
Scotland	South Lanarkshire	7.71	0.126	213	9.74	-2.85	609
England	Brent	7.71	0.431	214	7.50	-8.33	280
England	Ipswich	7.71	-0.040	215	11.84	3.94	167
England	East Northamptonshire	7.71	0.117	216	7.92	-6.80	96
England	Epsom and Ewell	7.71	-0.121	217	8.91	0.58	66
England	Southampton	7.70	0.320	218	9.91	-1.79	937
Scotland	Dundee City	7.70	0.336	219	10.82	-7.01	858

Country	LAD Name	Life Satisfaction	Change	Rank	Living Below HPL (%)	Change (%)	Sample Size
England	Derby	7.70	0.274	220	11.88	-4.28	801
Wales	Torfaen	7.70	0.370	221	12.27	-6.60	781
England	Richmond upon Thames	7.70	0.299	222	7.39	-5.34	316
England	North Dorset	7.70	-0.269	223	12.26	0.73	125
England	Birmingham	7.69	0.479	224	11.75	-7.10	997
England	York	7.69	0.031	225	9.37	-1.64	780
Wales	Ceredigion	7.69	0.078	226	10.53	-1.06	773
England	Croydon	7.69	0.680	227	12.77	-11.12	368
England	East Staffordshire	7.69	0.394	228	9.42	-7.66	143
England	Lewes	7.69	-0.012	229	9.19	-3.45	133
England	Redditch	7.69	0.323	230	11.49	-4.38	113
England	Torbay	7.68	0.329	231	12.79	-3.61	995
England	Stockton-on-Tees	7.68	0.155	232	14.23	1.68	737
England	Poole	7.68	0.192	233	10.86	-3.82	724
England	Wirral	7.68	0.290	234	10.32	-5.89	699
England	Havering	7.68	0.315	235	11.91	-4.77	379
England	Tendring	7.68	0.330	236	13.57	2.83	163
England	South Hams	7.68	0.300	237	15.17	-2.95	115
England	Plymouth	7.67	0.178	238	13.16	-1.40	848
England	Bradford	7.67	0.276	239	14.32	-2.45	687
Scotland	South Ayrshire	7.66	0.260	240	13.89	-1.68	667
England	Westminster	7.66	0.657	241	8.82	-9.47	345
England	Vale of White Horse	7.66	0.086	242	10.42	2.07	133
Wales	Caerphilly	7.65	0.258	243	12.69	-3.49	900
England	Bury	7.65	0.185	244	12.88	-1.66	812
England	Portsmouth	7.65	0.263	245	10.49	-3.58	702
England	Wandsworth	7.65	0.394	246	8.38	-5.02	333
England	Harrow	7.65	0.276	247	8.06	-7.58	314
England	Northampton	7.65	0.355	248	9.09	-4.85	204
England	Swale	7.65	-0.027	249	10.47	-1.94	154
England	West Lancashire	7.65	0.260	250	14.33	-4.38	125
England	Gravesham	7.65	0.118	251	12.09	-2.91	72
England	Richmondshire	7.65	-0.099	252	12.04	5.64	57
England	Southend-on-Sea	7.64	0.312	253	13.74	-2.90	876
England	Luton	7.64	0.327	254	12.14	-3.21	836
England	Reading	7.64	0.265	255	10.13	-2.29	589
England	Dacorum	7.64	0.141	256	11.02	-1.06	159
England	Worcester	7.64	0.612	257	10.23	-10.18	142
England	Wellingborough	7.64	0.658	258	9.63	-8.94	85
England	Tandridge	7.64	0.045	259	12.75	4.05	67
Wales	Pembrokeshire	7.63	0.070	260	14.01	2.42	867
England	Swindon	7.63	0.148	261	11.51	-3.27	777
England	St. Helens	7.63	0.243	262	11.06	-5.64	729
England	Peterborough	7.63	0.216	263	12.24	-4.40	679
Scotland	Aberdeen City	7.63	0.116	264	11.90	-1.72	556

Country	LAD Name	Life Satisfaction	Change	Rank	Living Below HPL (%)	Change (%)	Sample Size
Scotland	Clackmannanshire	7.63	-0.065	265	12.22	-2.21	403
England	Teignbridge	7.63	0.118	266	10.06	-3.61	161
England	Sunderland	7.62	0.307	267	13.48	-4.15	927
England	South Tyneside	7.62	0.395	268	13.22	-5.81	808
England	North Lincolnshire	7.62	0.161	269	14.30	-1.12	769
England	Halton	7.62	0.235	270	11.97	-5.39	738
England	Kingston upon Hull, City of	7.62	0.277	271	13.69	-3.97	687
England	Lancaster	7.62	-0.030	272	9.51	-4.01	204
England	Rushcliffe	7.62	-0.130	273	12.08	2.38	148
England	Middlesbrough	7.61	0.224	274	13.91	-4.52	870
England	Sefton	7.61	0.224	275	12.53	-1.88	787
England	Bournemouth	7.61	0.108	276	10.79	-2.46	773
Wales	Neath Port Talbot	7.61	0.117	277	14.83	-1.42	723
England	Cheltenham	7.61	-0.033	278	11.15	-1.16	162
England	Braintree	7.61	0.233	279	13.42	-1.43	159
England	Maidstone	7.61	0.081	280	12.15	-2.10	140
England	South Ribble	7.61	-0.020	281	11.61	-2.20	138
England	North Kesteven	7.61	-0.042	282	10.96	1.98	136
England	Oxford	7.61	0.076	283	9.82	-0.53	98
England	Norwich	7.60	0.149	284	12.24	-3.66	160
England	South Northamptonshire	7.60	-0.361	285	11.02	7.54	123
England	Eastbourne	7.60	0.257	286	13.18	-4.00	123
England	Fenland	7.60	0.349	287	9.80	-8.23	116
England	Castle Point	7.60	0.289	288	15.58	-0.06	90
England	Calderdale	7.59	0.141	289	12.79	-2.32	784
England	Doncaster	7.59	0.139	290	15.81	-2.57	755
England	Milton Keynes	7.59	0.180	291	13.61	-1.67	703
England	Newcastle upon Tyne	7.59	0.195	292	12.71	-1.96	654
Scotland	Inverclyde	7.59	0.245	293	13.45	-5.05	642
Scotland	Renfrewshire	7.59	0.188	294	11.55	-4.87	584
England	Oldham	7.58	0.280	295	15.95	-3.85	755
Scotland	Falkirk	7.58	0.077	296	12.09	1.20	693
Scotland	North Lanarkshire	7.58	0.116	297	14.57	-0.09	585
England	Rossendale	7.58	0.052	298	13.98	0.78	86
Wales	Carmarthenshire	7.57	0.138	299	11.93	-2.71	873
Wales	Newport	7.57	0.329	300	13.72	-4.70	796
Scotland	North Ayrshire	7.57	0.309	301	13.58	-6.14	773
England	Kirklees	7.57	0.200	302	14.51	-1.05	761
England	Bromley	7.57	-0.029	303	11.73	-0.65	374
England	Lincoln	7.57	0.211	304	6.09	-9.87	120
England	Barrow-in-Furness	7.57	0.189	305	14.65	0.42	111
England	Hartlepool	7.56	0.245	306	14.73	-2.16	858
England	Stoke-on-Trent	7.56	0.357	307	13.68	-4.44	845
Scotland	Stirling	7.56	-0.142	308	10.21	-0.17	729

Country	LAD Name	Life Satisfaction	Change	Rank	Living Below HPL (%)	Change (%)	Sample Size
Wales	Cardiff	7.56	0.162	309	11.40	-2.76	718
England	Brighton and Hove	7.56	0.136	310	10.69	-2.43	692
England	Knowsley	7.56	0.388	311	15.01	-6.92	680
England	Melton	7.56	-0.025	312	14.93	3.43	75
England	Blackpool	7.55	0.208	313	14.23	-3.46	1013
England	Salford	7.55	0.253	314	13.72	-2.68	671
Scotland	Fife	7.55	0.018	315	11.69	-0.83	481
England	Barnet	7.55	0.270	316	13.11	1.05	333
England	Stratford-on-Avon	7.55	-0.099	317	12.00	-0.62	169
Wales	Swansea	7.54	0.212	318	11.87	-4.17	901
Scotland	West Dunbartonshire	7.54	0.243	319	11.97	-4.21	838
England	Sandwell	7.54	0.154	320	12.57	-5.38	701
England	Slough	7.54	0.206	321	14.54	-1.96	668
England	Bexley	7.54	0.126	322	13.31	-2.46	403
England	Redbridge	7.54	0.240	323	12.06	-7.19	384
England	Greenwich	7.54	0.390	324	13.27	-5.92	330
England	Newham	7.54	0.313	325	14.61	-5.92	245
England	Bristol, City of	7.53	0.188	326	9.78	-4.71	877
England	Walsall	7.53	-0.058	327	13.79	-1.11	768
England	Manchester	7.53	0.365	328	12.38	-6.28	710
England	Thurrock	7.53	0.216	329	12.55	-5.05	707
England	Ealing	7.53	0.310	330	9.52	-7.21	223
England	Barking and Dagenham	7.52	0.431	331	16.89	-2.53	314
England	Spelthorne	7.52	0.119	332	8.38	-6.71	91
England	Pendle	7.52	0.504	333	16.06	-4.29	86
England	Wakefield	7.51	0.114	334	15.32	0.24	758
England	Dudley	7.51	-0.069	335	11.64	0.41	656
England	Medway	7.51	0.220	336	13.80	-3.35	610
England	Islington	7.51	0.367	337	8.70	-7.06	345
England	Colchester	7.51	0.470	338	11.86	-5.99	232
England	Watford	7.51	0.062	339	9.17	-4.37	86
England	Liverpool	7.50	0.188	340	13.36	-4.73	804
England	Hackney	7.50	0.429	341	10.77	-6.98	355
England	Harborough	7.50	-0.240	342	19.05	9.78	110
England	Nottingham	7.49	0.072	343	14.12	0.76	897
England	Lewisham	7.49	0.264	344	12.52	-5.22	363
England	Guildford	7.49	0.137	345	15.16	3.76	111
England	Rochdale	7.48	0.302	346	14.53	-7.44	830
Scotland	West Lothian	7.48	-0.173	347	13.31	2.43	617
England	Camden	7.48	0.236	348	10.30	-3.11	337
England	Coventry	7.47	0.110	349	13.29	-0.08	766
Scotland	Glasgow City	7.47	0.172	350	13.89	-3.06	725
England	Basildon	7.47	0.149	351	15.35	-2.68	174
England	Waltham Forest	7.46	0.216	352	16.42	-4.10	269
Wales	Rhondda Cynon Taf	7.45	0.101	353	16.18	-0.52	786

Country	LAD Name	Life Satisfaction	Change	Rank	Living Below HPL (%)	Change (%)	Sample Size
England	Canterbury	7.45	0.080	354	17.88	4.73	175
England	Breckland	7.45	-0.205	355	16.93	2.51	153
England	Exeter	7.44	-0.349	356	13.31	5.30	122
England	North Hertfordshire	7.41	-0.101	357	13.26	3.41	178
England	Wolverhampton	7.40	0.398	358	14.22	-4.99	833
England	Rotherham	7.39	-0.071	359	17.70	1.79	745
England	Enfield	7.37	0.122	360	13.95	-0.32	305
England	Hastings	7.37	0.191	361	15.49	-3.74	104
England	Haringey	7.35	0.184	362	15.45	-4.20	377
England	Southwark	7.34	0.138	363	11.38	-6.55	388
England	Mansfield	7.34	-0.046	364	22.72	5.92	107
England	Burnley	7.34	-0.165	365	16.04	-0.07	96
England	Surrey Heath	7.32	-0.349	366	15.29	7.23	75
England	Adur	7.31	-0.161	367	16.38	-2.79	69
England	Thanet	7.28	-0.171	368	16.89	-0.17	131
England	Kensington and Chelsea	7.23	-0.474	369	17.43	6.26	409
England	Lambeth	7.22	0.146	370	14.81	-5.62	313
England	Hertsmere	7.21	-0.605	371	13.73	3.37	73
England	Corby	7.20	-0.020	372	16.27	-2.75	67

Source Annual Population Survey (April 2012- March 2019) DOI <https://doi.org/10.57906/0qpl-6k77>

Notes: Sample restricted to respondents aged 16 years old and older. All numbers in this table are aggregated at the level of the Local Authority District in the year ending March 2019. The changes are calculated on the interval between April 2012 and March 2019. The sample sizes that the numbers are based on are presented in the last column. There are no instances in which shares and averages in this Table are calculated on less than 10 observations. As a consequence, the City of London has been dropped from the analysis. These numbers pertain to areas in England, Wales, and Scotland. The Rank refers to the ranking of areas according to Life Satisfaction, where the highest ranked area has the highest Life Satisfaction.

Table A.4: Life Satisfaction and The Share Living Below the Happiness poverty Line Across Local Authority Districts (April 2019- March 2022)

Country	LAD Name	Life Satisfaction	Change	Rank	Living Below HPL (%)	Change (%)	Sample Size
England	High Peak	8.34	0.409	1	3.01	-5.09	93
England	Torridge	8.25	0.744	2	1.68	-8.81	74
Scotland	Orkney Islands	8.17	-0.219	3	4.64	0.35	40
England	Daventry	8.16	0.135	4	7.15	2.66	75
England	Richmondshire	8.16	-0.092	5	6.21	1.25	58
England	Blaby	8.10	0.646	6	7.49	-8.91	100
England	Hambleton	8.09	0.416	7	6.54	-6.73	98
Scotland	Shetland Islands	8.09	0.372	8	13.40	1.52	53
England	West Lindsey	8.07	0.079	9	8.33	-0.42	123
England	Lichfield	8.06	0.213	10	3.33	-6.34	97
England	Worthing	8.05	0.253	11	7.09	0.05	105
England	Dartford	8.05	0.322	12	4.95	0.75	58
Scotland	Eilean Siar	8.03	-0.239	13	9.33	2.91	231
England	Horsham	8.03	0.106	14	4.60	0.23	101
England	North West Leicestershire	8.02	0.182	15	8.77	-0.76	99
England	Hinckley and Bosworth	8.01	0.463	16	6.97	-5.10	144
England	Kettering	8.01	0.279	17	11.39	-1.19	81
England	Surrey Heath	8.01	0.551	18	5.84	-5.44	77
England	North Devon	8.00	0.090	19	4.76	-8.23	171
England	Great Yarmouth	8.00	0.063	20	7.28	-3.14	83
England	Mid Suffolk	7.99	0.212	21	5.29	-3.86	98
England	Pendle	7.98	-0.214	22	10.55	5.57	87
England	Rochford	7.96	0.051	23	2.37	-3.94	84
England	Staffordshire Moorlands	7.94	0.048	24	4.87	-7.73	107
England	Three Rivers	7.93	0.212	25	3.30	-4.86	96
England	Charnwood	7.91	-0.061	26	9.53	2.31	193
England	Canterbury	7.91	0.270	27	5.99	-2.49	185
England	Lancaster	7.91	0.503	28	6.50	-6.45	172
England	Tandridge	7.91	0.183	29	4.88	-8.05	96
England	North Hertfordshire	7.90	0.046	30	3.41	-5.22	123
England	Uttlesford	7.90	0.053	31	6.77	-0.62	102
England	Castle Point	7.90	-0.084	32	6.37	-1.09	65
England	Bedford	7.89	0.121	33	7.35	-1.81	232
Scotland	East Renfrewshire	7.88	0.034	34	7.37	-0.84	341
England	Fylde	7.88	-0.271	35	8.41	1.33	103
England	Winchester	7.87	0.358	36	4.26	-12.18	112
England	Mole Valley	7.87	0.211	37	8.58	1.13	90
England	West Devon	7.87	-0.381	38	9.33	4.52	61
England	Stratford-on-Avon	7.86	-0.031	39	8.35	-2.53	225
England	Harrogate	7.86	0.127	40	7.37	-4.31	208
England	South Lakeland	7.86	-0.039	41	9.74	-1.73	203
England	Fareham	7.83	0.081	42	5.48	-6.30	194

Country	LAD Name	Life Satisfaction	Change	Rank	Living Below HPL (%)	Change (%)	Sample Size
England	South Oxfordshire	7.83	-0.043	43	6.59	0.04	170
England	Arun	7.83	-0.262	44	6.24	0.41	151
England	Cherwell	7.83	0.127	45	6.32	-3.66	150
England	Northampton	7.82	0.106	46	7.45	-1.38	169
England	Rother	7.82	0.019	47	10.21	-1.68	157
England	Cotswold	7.82	-0.049	48	5.03	-7.55	139
England	Teignbridge	7.80	0.007	49	4.98	-4.93	188
England	Braintree	7.80	0.153	50	6.87	-4.08	134
England	Bromsgrove	7.80	0.294	51	9.24	-2.02	119
England	Eden	7.80	-0.169	52	7.43	-0.83	97
England	Babergh	7.80	-0.440	53	8.48	1.12	97
England	Woking	7.80	-0.009	54	4.98	-6.10	89
England	Amber Valley	7.79	-0.132	55	9.84	0.52	169
England	Chorley	7.79	0.016	56	11.34	-2.88	136
England	Huntingdonshire	7.78	0.066	57	10.16	-1.91	204
England	North Lincolnshire	7.77	0.111	58	9.63	-3.83	487
England	Wealden	7.77	0.001	59	11.79	2.31	246
England	Test Valley	7.77	0.119	60	8.41	-2.13	163
England	Stockport	7.76	-0.015	61	7.78	-2.14	524
England	Cheshire East	7.76	0.082	62	10.24	1.82	441
England	Rutland	7.76	-0.011	63	8.18	-3.42	182
England	South Derbyshire	7.76	-0.070	64	5.98	-1.55	138
England	Rushmoor	7.76	0.134	65	8.87	-6.50	91
England	Corby	7.76	0.001	66	7.60	2.60	38
Scotland	Highland	7.75	-0.342	67	10.48	2.52	327
England	Mid Devon	7.75	0.089	68	16.38	2.05	122
Scotland	Dumfries & Galloway	7.73	-0.209	69	12.27	2.26	521
England	Broxtowe	7.73	-0.154	70	7.33	1.15	161
England	Epping Forest	7.73	-0.124	71	9.25	-0.75	123
England	Ribble Valley	7.73	-0.318	72	13.81	6.01	74
England	Central Bedfordshire	7.72	-0.088	73	10.32	1.14	378
England	New Forest	7.72	-0.133	74	10.42	0.19	278
England	Wyre	7.72	0.118	75	10.00	-2.39	148
England	Eastleigh	7.72	-0.081	76	6.26	-3.13	142
England	Vale of White Horse	7.72	-0.094	77	5.98	-7.05	133
England	Sevenoaks	7.72	-0.199	78	6.44	-1.90	103
England	Ryedale	7.72	-0.395	79	16.63	11.69	78
Wales	Denbighshire	7.71	-0.116	80	10.20	-0.61	575
England	South Kesteven	7.71	-0.184	81	9.55	1.39	157
England	Havant	7.71	-0.189	82	8.06	-2.71	126
England	West Oxfordshire	7.71	0.157	83	5.66	-7.19	120
England	South Hams	7.71	-0.596	84	8.96	2.47	113
England	East Staffordshire	7.71	0.060	85	11.94	-4.93	107
England	Ipswich	7.71	0.114	86	11.64	3.56	105
England	East Cambridgeshire	7.71	0.052	87	12.29	2.44	96

Country	LAD Name	Life Satisfaction	Change	Rank	Living Below HPL (%)	Change (%)	Sample Size
England	Newham	7.70	0.223	88	11.04	-2.67	159
England	Boston	7.70	-0.156	89	9.88	-1.20	55
England	East Riding of Yorkshire	7.69	-0.236	90	11.83	4.45	735
England	Newcastle upon Tyne	7.69	0.324	91	10.54	-3.64	495
England	Harrow	7.69	0.106	92	8.80	-1.00	275
England	Ealing	7.69	0.086	93	7.57	-3.84	199
England	Chelmsford	7.69	-0.235	94	11.06	2.22	163
England	Nuneaton and Bedworth	7.69	0.106	95	9.70	-1.10	149
England	Hastings	7.69	0.080	96	12.77	-3.47	124
England	Gosport	7.69	0.348	97	8.10	-10.56	82
England	Rossendale	7.69	0.364	98	7.82	-8.18	72
England	Wigan	7.68	0.112	99	12.37	-1.47	456
England	Wychavon	7.68	-0.107	100	9.81	-0.12	182
England	Ashford	7.68	0.033	101	10.53	-0.23	141
England	Hart	7.68	-0.146	102	9.46	0.17	139
England	Oxford	7.68	0.167	103	6.61	-5.52	105
England	Luton	7.67	-0.047	104	10.93	0.81	366
England	East Lindsey	7.67	-0.154	105	11.06	2.94	142
England	Copeland	7.67	-0.296	106	14.89	4.54	124
England	Sheffield	7.66	0.042	107	9.96	-3.12	644
England	Broadland	7.66	0.027	108	9.69	-0.75	159
England	Basildon	7.66	0.090	109	11.11	-2.26	149
England	Windsor and Maidenhead	7.65	-0.113	110	5.84	-3.84	631
England	York	7.65	-0.109	111	9.08	0.01	554
England	Erewash	7.65	-0.123	112	6.07	-2.72	129
England	South Staffordshire	7.65	-0.334	113	8.82	-1.74	108
England	Oadby and Wigston	7.65	0.256	114	8.85	-12.40	50
Wales	Carmarthenshire	7.64	0.074	115	9.72	-3.31	733
Wales	Monmouthshire	7.64	-0.158	116	9.25	-0.67	610
Wales	Neath Port Talbot	7.64	0.103	117	13.33	-1.78	558
England	Lewes	7.64	-0.018	118	10.36	1.04	143
Wales	Pembrokeshire	7.63	-0.083	119	12.37	1.87	730
Scotland	Argyll & Bute	7.63	-0.324	120	14.07	4.60	467
England	South Cambridgeshire	7.63	-0.077	121	12.12	5.94	202
England	Scarborough	7.63	0.013	122	15.52	4.20	155
England	Tendring	7.63	0.123	123	12.99	-3.24	137
England	Wakefield	7.62	0.132	124	12.87	-1.90	578
Scotland	East Dunbartonshire	7.62	-0.160	125	11.55	3.01	567
England	Tameside	7.62	-0.119	126	12.66	0.72	560
England	Tower Hamlets	7.62	0.045	127	8.52	-4.32	203
England	Sedgemoor	7.62	-0.152	128	11.52	1.32	183
England	Mendip	7.62	-0.298	129	11.92	3.46	152
England	Breckland	7.62	-0.049	130	7.09	-3.12	149
England	North Norfolk	7.62	-0.397	131	7.37	-4.13	119
England	Worcester	7.62	-0.007	132	9.87	-2.43	108

Country	LAD Name	Life Satisfaction	Change	Rank	Living Below HPL (%)	Change (%)	Sample Size
England	Watford	7.62	0.180	133	5.98	-8.01	98
England	Fenland	7.62	0.002	134	13.62	-1.10	93
England	Derbyshire Dales	7.62	0.150	135	15.64	0.45	81
Wales	Gwynedd	7.61	-0.341	136	12.23	1.67	586
England	Thurrock	7.61	0.051	137	12.98	1.77	463
England	South Somerset	7.61	0.023	138	16.91	4.53	199
England	Basingstoke and Deane	7.61	0.007	139	9.41	-2.34	196
England	Swindon	7.60	-0.121	140	9.85	-1.49	554
England	Stroud	7.60	-0.372	141	12.54	5.53	201
England	Barking and Dagenham	7.60	0.272	142	13.89	-4.56	164
England	Waverley	7.60	-0.087	143	7.40	-1.15	104
England	North Somerset	7.59	-0.155	144	11.04	1.86	643
England	Kirklees	7.59	0.118	145	10.97	-1.62	524
Wales	Powys	7.59	-0.204	146	13.40	3.42	503
Scotland	Aberdeenshire	7.59	-0.182	147	8.84	-0.18	459
England	Newcastle-under-Lyme	7.59	-0.267	148	16.44	5.72	126
England	Cornwall	7.58	-0.128	149	12.94	-0.38	717
Wales	Isle of Anglesey	7.58	-0.172	150	12.61	0.63	600
England	Merton	7.58	-0.184	151	8.89	0.70	250
England	Cheltenham	7.58	-0.135	152	8.53	-1.87	162
England	Elmbridge	7.58	-0.153	153	10.10	2.17	146
England	Brentwood	7.58	-0.042	154	7.75	-4.40	68
England	Brighton and Hove	7.57	-0.042	155	10.60	0.64	557
Scotland	Angus	7.57	-0.158	156	13.69	3.88	491
England	Leicester	7.57	-0.109	157	13.06	0.77	389
England	Havering	7.57	-0.160	158	11.53	1.35	330
Scotland	East Lothian	7.57	-0.240	159	9.44	0.33	327
England	Redbridge	7.57	-0.036	160	11.67	-1.63	231
Scotland	Clackmannanshire	7.57	-0.137	161	12.29	2.89	211
England	Harborough	7.57	-0.021	162	11.48	-3.69	130
England	West Lancashire	7.57	0.105	163	15.29	1.02	102
England	Selby	7.57	0.023	164	15.54	4.77	94
England	Shropshire	7.56	-0.350	165	11.02	2.79	551
England	Reigate and Banstead	7.56	-0.182	166	8.29	-2.33	157
England	Rugby	7.56	-0.303	167	8.44	0.54	152
England	Tunbridge Wells	7.56	-0.199	168	10.61	1.70	107
England	Southend-on-Sea	7.55	-0.157	169	13.22	3.06	619
England	Herefordshire, County of	7.55	-0.239	170	12.74	4.38	610
Scotland	Scottish Borders	7.55	-0.268	171	11.93	1.49	389
England	Wandsworth	7.55	0.116	172	9.80	-1.85	258
England	North Kesteven	7.55	-0.444	173	13.52	4.36	152
England	Gedling	7.55	-0.363	174	8.56	0.53	139
England	North Warwickshire	7.55	-0.327	175	16.64	7.80	78
England	Crawley	7.55	-0.278	176	8.96	0.55	75
England	County Durham	7.54	-0.038	177	13.91	0.22	734

Country	LAD Name	Life Satisfaction	Change	Rank	Living Below HPL (%)	Change (%)	Sample Size
England	Leeds	7.54	-0.007	178	11.77	1.02	720
England	Bath and North East Somerset	7.54	-0.070	179	13.97	3.69	589
Wales	Ceredigion	7.54	-0.115	180	10.55	-0.10	518
Scotland	South Ayrshire	7.54	-0.223	181	13.65	2.40	458
Wales	The Vale of Glamorgan	7.53	-0.290	182	12.15	0.49	520
England	Hillingdon	7.53	-0.138	183	11.76	1.66	212
England	Shepway	7.53	-0.121	184	15.40	5.56	121
England	North East Derbyshire	7.53	-0.662	185	11.72	6.94	103
England	South Gloucestershire	7.52	-0.122	186	11.58	2.83	689
England	Sefton	7.52	-0.234	187	15.26	3.54	553
England	South Tyneside	7.52	0.131	188	14.30	-2.03	534
England	Stoke-on-Trent	7.52	-0.209	189	15.43	4.77	527
Wales	Flintshire	7.52	-0.230	190	14.44	4.64	489
England	Dudley	7.52	0.014	191	11.74	1.64	383
Scotland	Falkirk	7.52	-0.189	192	15.54	4.81	348
Wales	Merthyr Tydfil	7.52	0.013	193	16.51	1.71	306
England	Dover	7.52	-0.021	194	13.61	4.92	150
Wales	Conwy	7.51	-0.157	195	14.29	1.13	638
England	North Tyneside	7.51	-0.146	196	13.40	1.68	572
England	Oldham	7.51	-0.099	197	14.59	1.39	453
Wales	Wrexham	7.51	-0.282	198	13.24	2.79	442
Scotland	Moray	7.51	-0.391	199	11.39	3.77	392
England	Wyre Forest	7.51	-0.448	200	9.58	-0.70	106
England	Birmingham	7.50	0.033	201	11.80	-1.90	839
England	Redcar and Cleveland	7.50	-0.082	202	14.74	-1.06	641
England	Middlesbrough	7.50	0.041	203	14.40	-2.01	572
England	West Berkshire	7.50	-0.175	204	11.82	0.69	449
England	Wolverhampton	7.50	0.055	205	14.84	1.43	397
Wales	Blaenau Gwent	7.50	-0.060	206	16.60	1.79	354
England	Lewisham	7.50	0.023	207	9.91	-2.12	263
England	King's Lynn and West Norfolk	7.50	-0.256	208	13.74	6.30	161
England	Norwich	7.50	0.079	209	13.62	-4.23	123
England	Telford and Wrekin	7.49	-0.079	210	14.11	0.58	398
England	Swale	7.49	-0.287	211	13.26	-0.39	110
England	Trafford	7.48	-0.229	212	11.15	1.07	490
England	St. Helens	7.48	-0.162	213	13.26	-0.02	411
England	East Devon	7.48	-0.474	214	13.09	7.13	222
England	South Holland	7.48	-0.223	215	17.89	4.24	105
England	Harlow	7.48	0.171	216	18.17	1.76	68
England	Bolsover	7.48	-0.417	217	8.63	-1.87	54
Wales	Swansea	7.47	-0.127	218	14.15	2.44	751
England	Bracknell Forest	7.47	-0.141	219	11.69	0.55	623
England	Wokingham	7.47	-0.323	220	9.85	0.71	575
England	Bradford	7.47	-0.205	221	10.79	-2.31	505
England	Cheshire West and Chester	7.47	-0.173	222	12.26	0.47	372

Country	LAD Name	Life Satisfaction	Change	Rank	Living Below HPL (%)	Change (%)	Sample Size
England	Croydon	7.47	-0.238	223	10.67	0.71	335
England	Richmond upon Thames	7.47	-0.347	224	9.82	4.36	330
England	Waltham Forest	7.47	0.190	225	11.05	-5.65	206
England	Allerdale	7.47	-0.590	226	11.88	4.39	162
England	Rotherham	7.46	-0.144	227	9.63	-3.44	487
Scotland	Stirling	7.46	-0.232	228	12.43	2.10	353
England	Kingston upon Thames	7.46	-0.115	229	10.36	-1.51	277
England	Tewkesbury	7.46	-0.530	230	14.63	7.60	143
England	Eastbourne	7.46	0.140	231	18.47	5.35	141
England	Cambridge	7.46	-0.006	232	8.82	-0.34	100
England	Broxbourne	7.46	-0.276	233	22.07	5.61	80
England	Calderdale	7.45	-0.114	234	10.02	-3.32	477
England	Manchester	7.45	-0.083	235	11.87	-0.48	405
England	Warwick	7.45	-0.299	236	8.06	-0.53	231
England	Carlisle	7.45	-0.200	237	16.88	0.64	134
England	Wiltshire	7.44	-0.233	238	10.94	2.27	774
England	Solihull	7.44	-0.310	239	11.43	1.55	642
England	Coventry	7.44	-0.128	240	12.53	-0.93	613
Wales	Caerphilly	7.44	-0.203	241	14.45	2.98	594
England	Blackpool	7.44	-0.104	242	17.24	2.79	577
England	Southampton	7.44	-0.115	243	11.66	1.62	525
England	Bury	7.44	-0.157	244	14.27	0.93	498
Wales	Torfaen	7.44	-0.089	245	15.73	-0.37	465
Scotland	Aberdeen City	7.44	-0.151	246	11.05	-0.11	420
England	Sutton	7.44	-0.046	247	12.74	-3.37	330
Scotland	Midlothian	7.44	-0.216	248	12.58	0.45	300
England	Bromley	7.44	-0.219	249	11.67	1.08	295
England	Milton Keynes	7.43	-0.166	250	12.97	2.11	573
England	Doncaster	7.43	0.051	251	16.42	1.96	478
England	Bolton	7.43	-0.045	252	17.37	0.28	464
England	Warrington	7.43	-0.364	253	12.45	3.74	440
Scotland	East Ayrshire	7.43	-0.171	254	15.44	2.72	398
England	Bexley	7.43	-0.315	255	14.22	5.14	317
England	Dacorum	7.43	-0.078	256	15.00	7.54	145
England	Tonbridge and Malling	7.43	-0.192	257	9.11	-2.89	121
England	Craven	7.43	-0.697	258	9.60	3.67	83
England	Tamworth	7.43	-0.164	259	14.52	3.20	73
England	Maldon	7.43	-0.038	260	16.28	6.65	71
England	Hartlepool	7.42	-0.205	261	15.59	0.76	659
England	Rochdale	7.42	-0.107	262	15.98	-0.52	501
Wales	Rhondda Cynon Taf	7.42	0.023	263	16.15	-1.13	499
Scotland	Edinburgh, City of	7.42	-0.179	264	9.40	0.31	481
England	Blackburn with Darwen	7.42	-0.410	265	16.67	4.63	403
England	Walsall	7.42	-0.198	266	18.52	5.12	372
England	Rushcliffe	7.42	-0.487	267	5.01	-5.35	151

Country	LAD Name	Life Satisfaction	Change	Rank	Living Below HPL (%)	Change (%)	Sample Size
England	Enfield	7.41	0.194	268	13.05	-3.22	258
England	Lambeth	7.41	-0.015	269	7.68	-3.76	194
England	Brent	7.41	-0.316	270	13.95	6.19	142
England	Mid Sussex	7.41	-0.322	271	13.07	-0.02	136
England	Maidstone	7.41	-0.423	272	13.78	5.38	117
England	Plymouth	7.40	-0.287	273	13.67	3.42	548
England	Hounslow	7.40	-0.297	274	15.29	2.10	221
England	East Hampshire	7.40	-0.348	275	8.89	1.76	117
England	Chichester	7.40	-0.138	276	12.36	0.14	110
England	Torbay	7.39	-0.269	277	15.89	2.94	797
England	Gloucester	7.39	-0.309	278	14.91	2.34	153
England	Guildford	7.39	-0.225	279	11.11	2.02	122
England	North East Lincolnshire	7.38	-0.356	280	15.68	2.83	573
England	Medway	7.38	-0.340	281	13.37	2.39	383
England	Westminster	7.38	0.037	282	14.78	0.91	157
England	Bristol, City of	7.37	-0.112	283	12.71	-0.57	718
England	Darlington	7.37	-0.341	284	15.23	5.01	643
Scotland	Inverclyde	7.37	-0.119	285	15.45	-0.12	381
England	Runnymede	7.37	-0.353	286	14.09	1.52	55
England	Portsmouth	7.36	-0.342	287	15.22	6.76	538
England	Salford	7.36	-0.172	288	14.56	1.36	367
England	Knowsley	7.36	-0.288	289	16.99	5.34	360
England	Barnet	7.36	-0.243	290	13.28	3.67	351
England	South Norfolk	7.36	-0.533	291	14.87	7.87	155
England	South Ribble	7.36	-0.283	292	15.36	6.53	126
England	Derby	7.35	-0.249	293	14.97	1.79	546
England	Camden	7.35	0.078	294	14.79	0.00	170
England	Colchester	7.35	-0.122	295	18.63	5.80	150
England	Cannock Chase	7.35	-0.684	296	17.64	5.77	104
England	Lincoln	7.35	0.000	297	14.25	4.07	101
England	Adur	7.35	-0.507	298	13.79	5.58	67
England	Liverpool	7.34	-0.136	299	13.95	0.11	436
England	Halton	7.34	-0.207	300	16.34	2.41	432
Scotland	South Lanarkshire	7.34	-0.452	301	14.35	4.88	403
Scotland	Renfrewshire	7.33	-0.173	302	13.10	-0.87	373
England	Thanet	7.33	0.302	303	18.11	-4.66	150
England	Chesterfield	7.33	-0.140	304	19.31	3.63	136
England	Preston	7.33	-0.427	305	15.98	2.44	124
England	Haringey	7.32	-0.340	306	13.04	3.97	256
England	Southwark	7.32	-0.169	307	12.12	1.55	240
England	Hackney	7.32	-0.009	308	10.98	-1.45	147
England	Barnsley	7.31	-0.418	309	16.83	5.78	564
Scotland	West Lothian	7.31	-0.215	310	17.73	5.67	327
England	Exeter	7.31	-0.810	311	12.33	6.48	154
England	Stockton-on-Tees	7.30	-0.377	312	15.27	3.86	645

Country	LAD Name	Life Satisfaction	Change	Rank	Living Below HPL (%)	Change (%)	Sample Size
Wales	Bridgend	7.30	-0.412	313	14.56	0.91	509
England	Reading	7.30	-0.515	314	12.28	5.40	357
England	Islington	7.30	-0.029	315	15.38	1.85	212
England	Hammersmith and Fulham	7.30	-0.329	316	12.62	2.61	198
England	Sandwell	7.29	-0.302	317	15.25	5.94	301
England	Hyndburn	7.29	-0.162	318	20.58	6.09	68
England	Barrow-in-Furness	7.28	-0.108	319	15.48	-2.51	111
England	Malvern Hills	7.28	-0.286	320	16.76	4.10	110
England	Wellingborough	7.28	-0.231	321	15.78	3.08	62
England	Isle of Wight	7.27	-0.365	322	20.15	9.17	686
Wales	Newport	7.27	-0.291	323	15.81	2.23	605
England	Peterborough	7.27	-0.341	324	15.46	3.29	462
Scotland	Dundee City	7.27	-0.182	325	14.38	0.66	414
England	Spelthorne	7.27	-0.634	326	14.73	9.18	117
England	Nottingham	7.25	-0.135	327	15.80	2.51	540
England	Wirral	7.25	-0.251	328	17.46	4.58	502
England	Kingston upon Hull, City of	7.25	-0.324	329	17.36	3.45	441
England	Slough	7.25	-0.233	330	11.72	-1.66	282
Wales	Cardiff	7.24	-0.371	331	16.80	6.81	492
England	Greenwich	7.24	-0.219	332	15.19	3.25	233
England	East Northamptonshire	7.24	-0.473	333	14.53	3.59	93
England	Sunderland	7.23	-0.234	334	14.07	-0.85	621
England	Ashfield	7.23	-0.120	335	13.81	0.25	138
England	Forest of Dean	7.21	-0.516	336	18.27	5.08	149
England	Bassetlaw	7.21	-0.629	337	18.49	9.29	123
Scotland	West Dunbartonshire	7.20	-0.261	338	15.88	-0.24	449
England	Kensington and Chelsea	7.18	-0.165	339	15.15	0.61	198
England	Mansfield	7.18	-0.745	340	16.47	8.06	86
England	Burnley	7.17	-0.443	341	9.43	-2.30	71
England	Gravesham	7.16	-0.453	342	17.31	1.19	43
Scotland	North Ayrshire	7.15	-0.220	343	18.36	1.81	428
England	Newark and Sherwood	7.14	-0.407	344	20.08	6.01	120
England	Epsom and Ewell	7.14	-0.869	345	21.34	16.85	66
England	Stafford	7.10	-0.839	346	19.56	10.70	184
England	Redditch	7.09	-0.677	347	22.68	13.47	102
England	Hertsmere	7.08	-0.574	348	18.33	1.20	105
England	Melton	7.03	-1.153	349	31.60	25.70	62
England	South Northamptonshire	6.93	-0.940	350	16.44	9.64	69

Source Annual Population Survey (April 2019- March 2022) DOI <https://doi.org/10.57906/0qpl-6k77>

Notes: Sample restricted to respondents aged 16 years old and older. All numbers in this table are aggregated at the level of the Local Authority District in the year ending March 2022. The changes are calculated on the interval between April 2019 and March 2022. The sample sizes that the numbers are based on are presented in the last column. There are no instances in which shares and averages in this Table are calculated on less than 10 observations. As a consequence, the City of London has been dropped from the analysis. These numbers pertain to areas in England, Wales, and Scotland. The Rank refers to the ranking of areas according to Life Satisfaction, where the highest ranked area has the highest Life Satisfaction.

Table A.5: Life Satisfaction and the Share Living Below the Happiness Poverty Line Across Major Cities (April 2012- March 2019)

City Name	Life Satisfaction	Change	Rank	Living Below HPL (%)	Change (%)	Sample Size
Bedford	8.06	0.826	1	6.37	-7.18	118
Worthing	7.98	0.677	2	6.46	-9.28	110
Newcastle-under-Lyme	7.98	0.188	3	8.45	-0.35	75
Sutton Coldfield	7.97	0.398	4	5.39	-8.30	183
Woking	7.96	0.116	5	6.46	-3.49	90
Preston	7.92	0.320	6	7.53	-7.98	112
Basingstoke	7.88	0.628	7	9.25	-11.89	91
Crawley	7.87	0.361	8	6.18	-9.41	86
Chelmsford	7.86	0.244	9	10.06	-4.98	108
Blackburn	7.85	0.651	10	10.81	-11.60	614
Ipswich	7.83	0.125	11	12.18	4.25	180
High Wycombe	7.83	0.434	12	8.93	-4.42	160
Solihull	7.82	0.229	13	10.47	-2.45	466
Norwich	7.82	0.449	14	9.05	-8.32	222
Carlisle	7.82	0.211	15	9.51	-1.75	145
Chesterfield	7.82	0.358	16	10.95	-2.44	106
Bracknell	7.79	0.450	17	9.34	-4.96	526
Gloucester	7.77	0.310	18	8.58	-8.77	190
Chester	7.77	0.320	19	12.39	2.69	124
Leicester	7.74	0.371	20	12.03	-3.66	612
Warrington	7.74	0.239	21	8.46	-4.93	562
Reading	7.73	0.281	22	9.48	-2.88	954
Sheffield	7.73	0.340	23	10.05	-6.08	672
Cambridge	7.73	0.245	24	6.83	-3.42	170
Stevenage	7.73	0.347	25	10.63	-7.75	104
Harlow	7.73	0.970	26	10.69	-14.70	80
York	7.72	0.154	27	10.02	-3.16	586
St Albans	7.72	0.527	28	8.40	-7.19	79
Darlington	7.71	0.270	29	11.29	-3.87	811
Poole	7.71	0.193	30	10.87	-3.80	710
Bury	7.71	0.313	31	14.21	-2.47	344
Barnsley	7.71	0.512	32	12.60	-9.94	271
Shrewsbury	7.71	0.335	33	9.57	-6.10	184
Lincoln	7.71	0.444	34	7.40	-9.19	126
Burton upon Trent	7.71	0.644	35	9.19	-12.75	88
Derby	7.70	0.281	36	12.14	-4.41	814
Sunderland	7.70	0.343	37	13.18	-3.65	591
Leeds	7.69	0.421	38	10.63	-6.68	582
Bath	7.69	0.072	39	8.95	-3.18	467
Plymouth	7.68	0.257	40	12.96	-2.82	848
Portsmouth	7.68	0.302	41	10.91	-3.71	715
Grimsby	7.68	0.508	42	17.64	-2.89	433

City Name	Life Satisfaction	Change	Rank	Living Below HPL (%)	Change (%)	Sample Size
Birkenhead	7.68	0.488	43	9.82	-11.68	161
Redditch	7.68	0.467	44	11.81	-5.79	111
Nuneaton	7.68	-0.095	45	7.76	0.22	80
Southampton	7.66	0.301	46	11.26	-1.82	957
Cheltenham	7.66	0.050	47	10.32	-4.55	162
Watford	7.66	0.245	48	6.08	-8.46	117
Luton	7.65	0.330	49	11.84	-3.30	855
Swindon	7.65	0.174	50	11.05	-4.68	662
Stockport	7.65	0.341	51	11.38	-3.24	250
Northampton	7.65	0.329	52	9.69	-4.03	206
Eastbourne	7.65	0.271	53	11.80	-6.78	132
Birmingham	7.64	0.466	54	13.16	-7.17	1184
Southend-on-Sea	7.64	0.334	55	13.85	-2.77	876
Telford	7.64	0.216	56	13.33	-3.87	658
Bolton	7.64	0.383	57	14.86	-6.92	484
Weston-Super-Mare	7.64	0.463	58	9.48	-9.69	310
Burnley	7.64	0.079	59	14.04	-2.11	92
Bournemouth	7.63	0.206	60	11.02	-3.44	789
Milton Keynes	7.62	0.305	61	12.11	-4.48	487
West Bromwich	7.62	0.336	62	11.39	-11.29	165
Bristol	7.61	0.224	63	9.52	-5.16	1172
Middlesbrough	7.61	0.260	64	14.90	-4.34	1112
Stoke-on-Trent	7.61	0.357	65	13.37	-4.53	869
Kingston upon Hull	7.61	0.276	66	13.96	-4.16	759
Peterborough	7.60	0.251	67	12.58	-4.85	580
Southport	7.60	0.281	68	10.29	-3.57	292
Oxford	7.60	0.041	69	10.79	1.39	110
Blackpool	7.59	0.291	70	14.23	-3.78	1021
Wigan	7.59	0.159	71	11.82	-4.82	204
Hemel Hempstead	7.59	0.193	72	13.70	-0.70	101
Guildford	7.59	0.339	73	12.17	-1.33	62
Cardiff	7.58	0.194	74	11.33	-4.26	688
Harrogate	7.58	-0.135	75	10.58	-2.64	97
London	7.57	0.319	76	11.87	-5.08	10616
Newport	7.57	0.356	77	14.36	-4.82	690
Oldham	7.57	0.358	78	17.08	-4.33	351
Doncaster	7.56	0.234	79	18.42	-3.05	281
Brighton and Hove	7.55	0.192	80	11.78	-2.69	595
Mansfield	7.55	0.154	81	20.65	4.69	85
Swansea	7.54	0.309	82	13.18	-5.29	639
Gateshead	7.54	0.340	83	16.67	-1.81	417
Manchester	7.53	0.367	84	12.34	-7.42	874
Hartlepool	7.52	0.236	85	14.88	-2.26	815
South Shields	7.52	0.402	86	13.06	-7.94	365
Gillingham	7.50	0.220	87	15.09	-1.12	254

City Name	Life Satisfaction	Change	Rank	Living Below HPL (%)	Change (%)	Sample Size
Liverpool	7.49	0.243	88	13.96	-5.36	1187
Salford	7.49	0.280	89	13.48	-5.13	236
Worcester	7.48	0.311	90	12.75	-6.61	142
Slough	7.47	0.149	91	14.74	-0.96	672
Newcastle upon Tyne	7.47	0.151	92	14.53	-1.24	613
Halifax	7.47	0.102	93	16.16	-1.07	313
Maidstone	7.47	-0.082	94	15.77	0.65	84
Wolverhampton	7.46	0.429	95	13.28	-4.68	779
Coventry	7.45	0.149	96	13.60	-1.04	776
St Helens	7.45	0.152	97	14.49	-4.55	451
Scunthorpe	7.45	0.200	98	16.41	-2.73	347
Colchester	7.45	0.484	99	13.84	-4.22	163
Nottingham	7.44	0.127	100	15.08	0.24	794
Exeter	7.44	-0.377	101	13.57	3.84	114
Huddersfield	7.42	0.168	102	16.57	-1.40	282
Chatham	7.42	0.282	103	13.09	-9.08	141
Wakefield	7.41	0.179	104	18.01	1.74	240
Walsall	7.39	-0.203	105	17.14	1.61	137
Bradford	7.37	0.142	106	20.18	0.64	397
Basildon	7.35	0.376	107	18.28	-8.26	112
Hastings	7.35	0.199	108	16.32	-4.23	104
Dudley	7.34	0.017	109	14.34	1.20	157
Stockton-on-Tees	7.33	-0.297	110	19.15	6.76	305
Rotherham	7.33	-0.097	111	17.32	0.61	304
Rochdale	7.29	0.190	112	18.11	-5.25	392

Source Annual Population Survey (April 2012- March 2019) DOI <https://doi.org/10.57906/Oqp1-6k77>

Notes: Sample restricted to respondents aged 16 years old and older. All numbers in this table are aggregated at the level of major cities in the year ending March 2019. The changes are calculated on the interval between April 2012 and March 2019. The sample sizes that the numbers are based on are presented in the last column. There are no instances in which shares and averages in this Table are calculated on less than 10 observations. These numbers pertain to areas in England and Wales. The Rank refers to the ranking of areas according to Life Satisfaction, where the highest ranked area has the highest Life Satisfaction.

Table A.6: Life Satisfaction and the Share Living Below the Happiness poverty Line Across Major Cities (April 2019- March 2022)

City Name	Life Satisfaction	Change	Rank	Living Below HPL (%)	Change (%)	Sample Size
Worthing	8.09	0.215	1	7.53	1.14	112
Woking	8.00	0.245	2	5.62	-6.00	90
Harrogate	7.96	0.431	3	8.61	-9.48	87
St Albans	7.94	-0.255	4	4.74	0.47	78
High Wycombe	7.92	0.155	5	5.79	-2.68	141
Bedford	7.84	0.285	6	10.96	2.17	107
Wigan	7.80	0.234	7	13.11	-1.60	111
Stockport	7.73	0.211	8	8.71	-4.81	172
Sutton Coldfield	7.73	0.061	9	9.27	-2.74	160
Watford	7.71	0.141	10	5.12	-6.61	137
Chelmsford	7.71	-0.196	11	9.45	2.37	104
Northampton	7.70	-0.037	12	7.01	-2.20	220
Worcester	7.68	0.058	13	9.01	-4.11	109
Nuneaton	7.67	0.121	14	10.02	-1.74	106
Ipswich	7.66	0.006	15	12.66	2.44	117
Sheffield	7.64	-0.008	16	10.46	-1.52	597
Newcastle upon Tyne	7.64	0.330	17	11.75	-4.43	460
Wakefield	7.64	0.109	18	13.68	0.66	161
Luton	7.62	-0.066	19	11.57	1.24	373
Dudley	7.62	0.242	20	12.53	-0.92	61
Poole	7.61	0.037	21	11.32	-1.63	455
York	7.61	-0.087	22	10.02	-0.39	409
Southport	7.60	-0.094	23	11.20	-1.67	197
Oxford	7.60	0.172	24	8.48	-5.66	113
Telford	7.59	0.091	25	12.73	-2.07	328
Chester	7.59	-0.408	26	14.33	9.42	94
Hastings	7.58	0.042	27	14.67	-2.62	124
Stoke-on-Trent	7.55	-0.187	28	14.11	3.43	553
Harlow	7.55	0.138	29	18.27	-0.46	65
Southend-on-Sea	7.54	-0.160	30	13.83	3.16	619
Solihull	7.54	-0.172	31	10.28	-1.05	324
Basildon	7.54	0.165	32	14.63	-1.74	87
Swindon	7.53	-0.135	33	10.94	-2.39	433
Scunthorpe	7.53	-0.072	34	15.14	0.49	201
Cambridge	7.53	-0.034	35	10.58	3.38	129
Mansfield	7.53	-0.475	36	13.17	5.08	67
Shrewsbury	7.52	-0.450	37	10.76	4.33	139
Leeds	7.51	-0.073	38	13.03	1.47	397
Wolverhampton	7.51	-0.039	39	14.85	2.16	383
Norwich	7.51	-0.030	40	13.40	0.31	181
Gloucester	7.51	-0.312	41	13.91	3.59	179
Basingstoke	7.51	-0.202	42	11.23	2.11	124

City Name	Life Satisfaction	Change	Rank	Living Below HPL (%)	Change (%)	Sample Size
Leicester	7.50	-0.121	43	14.17	0.83	451
Weston-Super-Mare	7.50	-0.223	44	12.93	2.79	233
Doncaster	7.50	0.089	45	11.44	-5.93	176
West Bromwich	7.50	0.014	46	15.19	2.12	69
Bracknell	7.49	-0.103	47	12.12	-0.38	412
Bath	7.49	-0.035	48	14.78	5.05	290
Cheltenham	7.49	-0.229	49	9.74	-0.44	162
Hemel Hempstead	7.48	-0.198	50	16.88	11.92	81
Bradford	7.47	-0.160	51	11.33	-1.90	247
London	7.46	-0.040	52	12.08	-0.61	7595
Middlesbrough	7.46	0.028	53	15.12	-2.35	711
Huddersfield	7.46	0.124	54	13.01	-2.33	212
Hartlepool	7.45	-0.144	55	16.20	0.11	618
Manchester	7.45	-0.041	56	11.35	-1.24	519
Southampton	7.44	-0.203	57	12.86	2.91	552
Salford	7.44	-0.165	58	12.12	-1.38	134
Reading	7.43	-0.357	59	10.85	2.89	616
Portsmouth	7.43	-0.272	60	14.07	5.02	569
Eastbourne	7.43	0.094	61	17.71	3.37	166
Plymouth	7.42	-0.275	62	13.54	2.39	552
Milton Keynes	7.42	-0.102	63	14.54	2.60	346
South Shields	7.42	0.119	64	18.28	1.64	265
Maidstone	7.42	-0.255	65	15.44	4.81	77
Blackpool	7.41	-0.053	66	17.65	2.47	586
Oldham	7.41	-0.043	67	16.33	1.33	180
Halifax	7.41	-0.176	68	9.37	-2.31	175
Chatham	7.41	-0.466	69	14.71	5.86	91
Blackburn	7.40	-0.248	70	18.94	5.00	276
Rochdale	7.40	-0.086	71	17.22	0.68	233
Burton upon Trent	7.40	-0.087	72	16.32	-1.93	59
Bristol	7.39	-0.103	73	12.88	0.04	1000
Coventry	7.39	-0.136	74	13.71	-0.72	628
Brighton and Hove	7.39	-0.143	75	12.40	1.47	474
Crawley	7.39	-0.437	76	11.98	1.92	75
Darlington	7.38	-0.290	77	16.29	4.65	543
Warrington	7.38	-0.356	78	13.54	3.69	358
Colchester	7.38	0.157	79	15.21	-2.48	95
Birmingham	7.37	-0.102	80	13.88	0.04	899
Derby	7.37	-0.239	81	15.67	2.30	558
Swansea	7.37	-0.132	82	16.65	2.05	542
Bournemouth	7.37	-0.326	83	14.62	4.16	466
Stockton-on-Tees	7.37	0.001	84	15.30	-1.25	269
Carlisle	7.36	-0.035	85	20.27	1.65	90
Liverpool	7.35	-0.152	86	14.07	0.64	639
Rotherham	7.35	-0.017	87	14.51	-2.06	175

City Name	Life Satisfaction	Change	Rank	Living Below HPL (%)	Change (%)	Sample Size
Newport	7.34	-0.159	88	16.12	1.85	526
Bolton	7.34	-0.197	89	18.04	1.55	262
Stevenage	7.34	-0.189	90	16.46	6.29	82
Exeter	7.33	-0.731	91	12.15	7.36	142
Kingston upon Hull	7.32	-0.311	92	17.65	4.69	503
Slough	7.31	-0.146	93	12.55	-0.67	298
Lincoln	7.30	-0.319	94	17.38	6.61	108
Bury	7.27	-0.315	95	18.21	2.98	200
Burnley	7.27	-0.238	96	12.44	-1.09	68
Nottingham	7.24	-0.215	97	17.39	4.34	494
Chesterfield	7.24	-0.251	98	18.92	2.47	114
Peterborough	7.23	-0.346	99	16.42	3.40	383
Gillingham	7.22	-0.351	100	15.09	-0.26	142
Preston	7.22	-0.646	101	19.63	8.58	110
Cardiff	7.21	-0.316	102	17.34	6.20	461
Sunderland	7.21	-0.236	103	13.30	-3.41	342
Gateshead	7.21	-0.279	104	18.68	3.36	285
St Helens	7.21	-0.235	105	16.59	0.07	225
Grimsby	7.18	-0.416	106	19.58	3.87	298
Newcastle-under-Lyme	7.15	-0.526	107	26.79	9.89	81
Guildford	7.13	-0.305	108	15.82	6.34	72
Barnsley	7.09	-0.381	109	19.63	4.68	214
Redditch	7.05	-0.705	110	25.08	14.87	99
Birkenhead	7.01	-0.309	111	25.39	7.82	127
Walsall	6.98	-0.356	112	27.14	7.36	69

Source Annual Population Survey (April 2019- March 2022) DOI <https://doi.org/10.57906/0qp1-6k77>

Notes: Sample restricted to respondents aged 16 years old and older. All numbers in this table are aggregated at the level of major cities in the year ending March 2019. The changes are calculated on the interval between April 2019 and March 2022. The sample sizes that the numbers are based on are presented in the last column. There are no instances in which shares and averages in this Table are calculated on less than 10 observations. These numbers pertain to areas in England and Wales. The Rank refers to the ranking of areas according to Life Satisfaction, where the highest ranked area has the highest Life Satisfaction.

